

Activity Name	Original Duration	Planned Start	Planned Finish	2011				2012				2013				2014				2015				2016	
				Q3	Q4	Q1	Q2	Q3	Q4	Q1	Q2	Q3	Q4	Q1	Q2	Q3	Q4	Q1	Q2	Q3	Q4	Q1	Q2		
<b>HY/2009/15 - CWB TUNNEL (CBTS SECTION)</b>																									
<b>SUBMISSIONS COMPLYING WITH EPs</b>																									
EM&A Manual ( rely on the Master EP's submission EP-364/2009/A Condition 2.9)																									
Baseline Monitoring Report (rely on the Master EP's submission EP-364/2009 Condition 3.3)																									
Monthly EM&A (rely on the masters EP's Submission, EP-364/2009/A Condition 3.4)																									
A dedicated website (rely on the master EP's submission, EP-364/2009/A Condition 4.2)																									
Management organization of main construction companies (FEP Condition 2.6)	1d	02-Oct-10	02-Oct-10																						
Work Schedule (FEP Condition 2.7)	1d	27-Oct-10	27-Oct-10																						
Location Plan (FEP Condition 2.8)	1d	27-Oct-10	27-Oct-10																						
Noise Management plan (FEP Condition 2.9)	1d	27-Oct-10	27-Oct-10																						
Landscape plan (FEP condition 2.10)	1d	31-Jan-11	31-Jan-11																						
<b>EAST VENTILATION ADIT</b>																									
CCT @ Portion 1, 2, 4, 6, 22	1315d	27-Sep-10	03-May-14																						
EV Adit @ Portion 4-Advance Works	526d	27-Sep-10	05-Mar-12																						
EV Adit Portion 1, 2, 6, 22	26d	22-Dec-11	16-Jan-12																						
EV Adit-based on Conforming Design	323d	15-Feb-12	02-Jan-13																						
<b>TCBR1E (TS1 Area)</b>																									
Diaphragm Wall Construction (incl. SI, & tests after completion)	107d	26-Apr-11	10-Aug-11																						
Excavation & Lateral Support, ELS	99d	16-Jul-11	22-Oct-11																						
Cut & Cover Tunnel Construction (incl. backfill)	78d	22-Oct-11	07-Jan-12																						
OHVD and Cable Trough (access from Portion 22)	76d	18-Dec-13	03-Mar-14																						
<b>TCBR2 + TCBR3 (TS2 Area)</b>																									
Diaphragm Wall Construction	118d	06-Jul-12	31-Oct-12																						
Excavation & Lateral Support, ELS	248d	06-Jul-12	10-Mar-13																						
Cut & Cover Tunnel Construction	164d	11-Mar-13	21-Aug-13																						
OHVD Cable Trough (Access from Portion 22)	150d	05-Aug-13	01-Jan-14																						
<b>TCBR1W (TS4 Area)</b>																									
Diaphragm Wall Construction	148d	28-Jun-11	22-Nov-11																						
Excavation & Lateral Support, ELS	319d	26-Jun-11	11-May-12																						
Landing Steps - Demolition/Reconstruct as footpath	40d	28-Jun-11	23-Aug-11																						

- ◆ Milestone
- ◆ Milestone
- ▨ Remaining Work
- ▨ Critical Remaining Work
- ▨ Actual Work

1 of 2

**China State Construction Engineering (Hong Kong) Ltd.**

**Contract No. HY/2009/15 - Central Wan Chai By Pass - Tunnel**

**( CBTS Section )**

Prepared by William Caluza			
Date	Revision	Checked	Approved
14-Mar-11	Revision C	ST	KL
	File: GC01a		
	(Layout:HY/2009/15: CWB - Summary)		

**中國建築工程(香港)有限公司**

CHINA STATE CONSTRUCTION ENGINEERING (HONG KONG) LTD

Activity Name	Original Duration	Planned Start	Planned Finish	2011					2012				2013				2014				2015				2016	
				Q3	Q4	Q1	Q2	Q3	Q4	Q1	Q2	Q3	Q4	Q1	Q2	Q3	Q4	Q1	Q2	Q3	Q4	Q1	Q2	Q3	Q4	Q1
Rock Excavation	235d	25-Apr-12	15-Dec-12																							
ME4-Diaphragm Wall	114d	10-May-12	19-Oct-12																							
AS Logistics Area for Mined Tunneling Works	174d	01-Jun-12	07-Feb-13																							
ME4-ELS Works	212d	01-Jun-12	02-Apr-13																							
SCL Entrusted Works	291d	18-Jul-12	08-Sep-13																							
Cut & Cover Tunnel Construction (w/o TS4 +)	111d	17-Dec-12	06-Apr-13																							
ME4-RC Structure	146d	28-Jan-13	21-Aug-13																							
OHVD and Cable Trough (Access from TZ5/TPCWAE/TPCWAW)	180d	17-Jun-13	13-Dec-13																							
<b>MINED TUNNEL</b>																										
CHT Protection Works @ location A, B, C	342d	27-Sep-10	01-Feb-12																							
Tunnel works from West Portal (access from TPCWAE& TZ5)	418d	12-Mar-12	30-Oct-13																							
Tunnel Works from East Portal (Access from TS4 Area)	214d	30-Mar-12	01-Feb-13																							
Tunnel OHVD & Cable Trough	384d	02-Dec-13	22-May-15																							
<b>TPCWAE</b>																										
Drainage Diversion works along Hung Hing Road (Portion 19)	176d	15-Oct-10	24-Jun-11																							
Diaphragm Wall Construction	147d	20-May-11	13-Oct-11																							
Excavation & Lateral Support, ELS	421d	20-May-11	13-Jul-12																							
Rock Excavation	208d	12-Mar-12	03-Oct-12																							
AS Logistics Area for Mined Tunneling works	342d	12-May-12	18-Apr-13																							
Cut & Cover Tunnel Construction	130d	28-Jan-13	06-Jun-13																							
OHVD and Cable Trough ( Access from TZ5/TPCWAW)	182d	18-Feb-15	18-Aug-15																							
<b>TPCWAW &amp; PORTION 11</b>																										
Diaphragm Wall Construction + Portion 11	222d	25-Oct-13	03-Jun-14																							
Excavation & Lateral Support, ELS	478d	25-Oct-13	14-Feb-15																							
Cut & Cover Tunnel Construction	143d	30-Dec-14	21-May-15																							
OHVD and Cable Trough Installation (Access from Portion 11)	235d	22-May-15	11-Jan-16																							

- ◆ Milestone
- ◆ Milestone
- ▬ Remaining Work
- ▬ Critical Remaining Work
- ▬ Actual Work

2 of 2

**China State Construction Engineering (Hong Kong) Ltd.**  
**Contract No. HY/2009/15 - Central Wan Chai By Pass - Tunnel**  
**( CBTS Section)**

Prepared by William Caluza			
Date	Revision	Checked	Approved
14-Mar-11	Revision C	ST	KL
	File: 0001a		
	(Layout: HY/2009/15: CWB - Summary)		







Data Date: 20-Aug-11  
 Print Date: 28-Aug-11  
 CCP3-2

## HY/2009/18 Central - Wan Chai Bypass (Central Interchange)

TASK filter: HL



Activity Name	Start	Finish	Total Float	2011					2012					2013					2014					2015					2016					2017
				J	F	A	M	J	J	F	A	M	J	J	F	A	M	J	J	F	A	M	J	J	F	A	M	J	J	F	A	M	J	J
<b>CWB - Central Interchange</b>																																		
<b>HIGH LEVEL PROGRAMME</b>																																		
<b>DATE FOR COMMENCEMENT &amp; COMPLETION</b>																																		
Contract Commencement	21-Sep-10 A	03-Jan-11 A																																
Contract Construction Completion		30-Jan-16	365																															
Contract DLP and Establishment Works Completion		29-Jan-17	0																															
<b>PRELIMINARIES</b>																																		
Preliminary Submissions / Approvals	21-Sep-10 A	03-Jan-11 A																																
Commence Site Mobilisation	03-Jan-11 A																																	
Mobilise, Hoarding & Site Clearance	03-Jan-11 A	14-May-11 A																																
<b>PORTION IV WORKS</b>																																		
<b>CWB Tunnel CH1480 to CH1580</b>																																		
Site Investigation	11-May-11 A	15-Sep-11	28																															
Construct Guide Walls	27-Jun-11 A	30-Sep-11	20																															
Construct D-Wall / Barrettes	26-Aug-11	19-Apr-12	20																															
ELS Works	20-Apr-12	11-Oct-12	19																															
Construct CWB Tunnel & Ventilation Building	12-Oct-12	21-Jun-13	19																															
Works inside CWB Tunnel	22-Jun-13	24-Sep-13	18																															
KD-8 Complete		13-Oct-13*	0																															
<b>CWB Tunnel CH1580 to CH1646</b>																																		
Construction Diversion for Finance Street	05-Sep-11	22-Oct-11	42																															
East End of Finance St. Closed		23-Oct-11	219																															
Site Investigation	30-Jul-11 A	09-Dec-11	126																															
Construct Guide Walls	30-Jul-11 A	04-Jan-12	97																															
Construct D-Wall / Barrettes	19-Mar-12	30-Jul-12	18																															
ELS Works	31-Jul-12	19-Dec-12	22																															
Construct CWB Tunnel	20-Dec-12	16-Apr-13	20																															
Works inside CWB Tunnel	10-Aug-13	13-Dec-13	161																															
KD-7 Complete		23-May-14*	0																															
<b>CWB Tunnel CH1646 to CH1685</b>																																		
Man Yiu St. Diverted (Possess Portion IIA, IIB)		01-Feb-12	52																															
Site Clearance & Divert Existing Utilities	01-Feb-12	29-Mar-12	60																															
Site Investigation	30-Mar-12	04-May-12	54																															
Sheet Pile / Pipe Pile / Grouting	26-Mar-12	29-May-12	63																															
Construct Guide Walls	05-May-12	02-Jun-12	55																															
Construct Barrettes	04-Jun-12	04-Jul-12	52																															
Temporary Works to Support C/W Pipes	30-May-12	25-Jun-12	61																															
ELS Works	05-Jul-12	08-Dec-12	56																															
Demolish & Reconstruct CWB Tunnel	07-Dec-12	08-Mar-13	59																															
Works Inside CWB Tunnel	22-Jun-13	23-Oct-13	212																															
<b>Surface Works</b>																																		
Backfill, U/G Services, Roadworks & Landscaping	25-Jan-13	11-Jan-14	296																															
KD-6 Complete		03-Nov-14*	0																															
<b>PORTION III WORKS</b>																																		
<b>CWB Tunnel CH1685 to CH1704</b>																																		
Access to CR III Works Area	01-Sep-11		56																															
Works Area within CR III Preparation	01-Sep-11	31-Dec-11	61																															
Site Investigation	01-Feb-12	13-Mar-12	374																															
Construct Guide Walls	29-Feb-12	30-Mar-12	379																															
Construct D-Wall / Barrettes (thru old seawall)	31-Mar-12	12-Sep-12	376																															
Construct Man Yiu Street Temporary Diversion	24-Nov-11	31-Jan-12	52																															
ELS Works	13-Sep-12	19-Dec-12	377																															
Construct CWB Tunnel (excl. roof slab)	20-Dec-12	23-Mar-13	375																															
Break into Existing CWB Tunnel	25-Mar-13	25-Apr-13	377																															
Construct CWB Tunnel Roof Slab	09-Jul-13	19-Aug-13	304																															
Works inside CWB Tunnel	20-Aug-13	05-Nov-13	269																															
<b>CWB Tunnel CH1704 to CH1825</b>																																		
KD-4 Complete		01-Aug-14*	0																															
Works inside CWB Tunnel	16-Oct-12	09-Oct-13	271																															
<b>CWB Tunnel CH1825 to CH2600</b>																																		
Works inside CWB Tunnel	10-Apr-12	02-Sep-13	100																															
KD-5 Complete		31-Jan-14*	0																															
<b>Surface Works</b>																																		
Road P1 Roadworks & Landscaping	20-Aug-13	19-Mar-14	324																															
Man Yiu St. Widening Roadworks & Landscaping	31-Jul-13	27-Nov-13	415																															
KD-3 Complete		06-Feb-15*	0																															
<b>PORTION V WORKS</b>																																		
<b>Mobilization, Set up, Utilities Diversion, Tree</b>																																		
Mobilization, Set up, Utilities Diversion, Tree	03-Jan-11 A	03-Jun-11 A																																
Construct Trough B Structure - Phase 1	20-May-11 A	04-Aug-12	587																															
Construct Trough B Structure - Phase 2b	12-Oct-11	06-Sep-13	335																															
Temporary Drainage Diversion	15-Jul-13	23-Oct-13	19																															
Construct Trough B Structure - Phase 2a	24-Oct-13	26-Jul-14	33																															
Construct Trough B Structure - West End Portion	21-Jul-14	15-Oct-14	19																															
Portion VI Access Date	12-Nov-12		322																															
Man Kwong St. WB Widening	12-Nov-12	05-Apr-13	320																															
Construct Retaining Wall D	29-Jul-13	20-Dec-13	90																															
Remaining Roadworks & Landscaping	16-Nov-13	15-Jul-14	111																															
KD-9 Complete		03-Nov-14*	0																															
<b>PORTION VI WORKS</b>																																		
<b>Portion VI Access Date</b>																																		
Portion VI Access Date	12-Nov-12		219																															
Man Kwong St. WB Widening	12-Nov-12	05-Apr-13	209																															
Retaining Walls F	15-Oct-14	02-Jun-15	95																															
Retaining Walls G	12-Nov-12	12-Oct-13	693																															
Bridge B	12-Nov-12	25-Aug-14	523																															
Trough A	21-Dec-13	14-Oct-14	63																															
Elevated Layby at Ramsey St. Flyover	23-Apr-14	29-Jul-15	185																															
Bridge A	12-Nov-12	01-Aug-14	157																															
Open Snp Road D / Man Po St.		14-Oct-14	838																															
Retaining Wall A & B	15-Oct-14	16-Jun-15	91																															
Remaining U/G Services, Roadworks & Landscaping	07-Nov-14	14-Sep-15	82																															
KD-10 Complete		30-Jan-16*	0																															
KD-16 Complete		30-Jan-16*	0																															
Landscaping Establishment (Last Area)	15-Sep-15	13-Sep-16	138																															
KD-15 Complete		29-Jan-17	0																															

Data Date: 20-Apr-12  
 Print Date: 25-Apr-12

# HY/2009/18 Central - Wan Chai Bypass (Central Interchange)

TASK filters: 3 Months, Not HL.



Activity ID	Activity Name	Original Durati...	Start	Finish	Total Float	2012			
						Apr	May	Jun	Jul

**Updated 2012-04-20 CWB - Central Interchange (2011-12-23) Revised Detailed Wo...**

## PRELIMINARIES

### Access Dates & Milestones

#### Portion Possession Dates

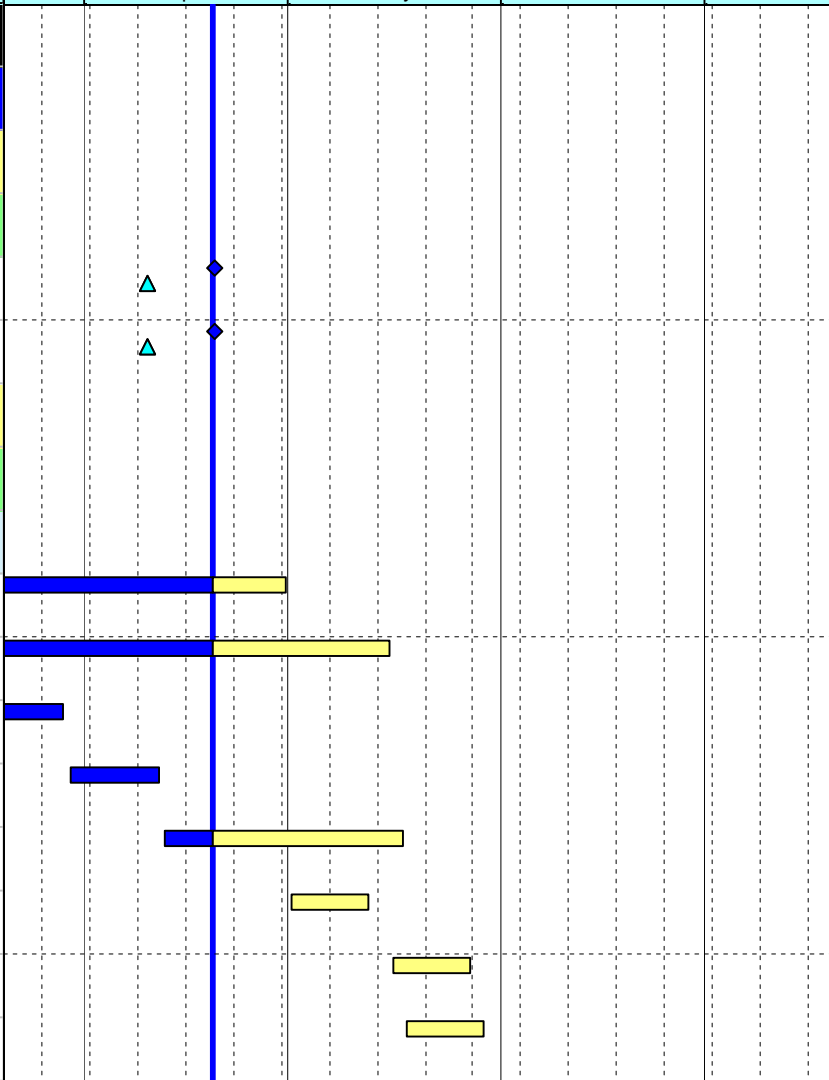
1285	Portion III B Available (DAY-567)	0	20-Apr-12*		-10				
1295	Portion III C Available (DAY-567)	0	20-Apr-12*		-10				

### Submissions & Approvals

#### Specified Plans

#### MTRC Impact Assessment Report

1558	Resubmit MTRC Impact Assessment Report - Cut & CoverTunnel	28	17-Feb-12 A	30-Apr-12	92				
1501	Resubmit MTRC Impact Assessment Report - Phase 2	12	19-Feb-12 A	15-May-12	138				
1371	Resubmit MTRC Impact Assessment Report - MYS Tunnel	28	25-Feb-12 A	29-Mar-12 A					
1534	MTRC Impact Assessment Report - Engineer / MTRC Review & Comment	12	30-Mar-12 A	12-Apr-12 A					
1535	Resubmit MTRC Impact Assessment Report - MYS Tunnel	28	13-Apr-12 A	17-May-12	121				
1559	MTRC Impact Assessment Report - Engineer / MTRC Review & Comment (Cut & Cover)	12	01-May-12	12-May-12	92				
1504	MTRC Impact Assessment Report - Engineer / MTRC Review & Comment (Phase 2)	12	16-May-12	27-May-12	138				
1553	MTRC Impact Assessment Report - Engineer / MTRC Review & Comment (MYS)	12	18-May-12	29-May-12	121				



- ◆ Current Milestone
- Critical Remaining Work
- ▬ Level of Effort
- ▬ Remaining Work
- ▲ Baseline Milestone
- ▬ Project Baseline
- ▬ Actual Work

## Leighton Contractors (Asia) Limited Programme Update 19 (Apr 2012) THREE MONTH ROLLING

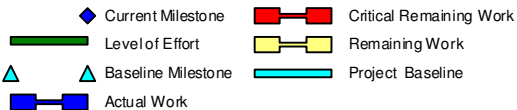
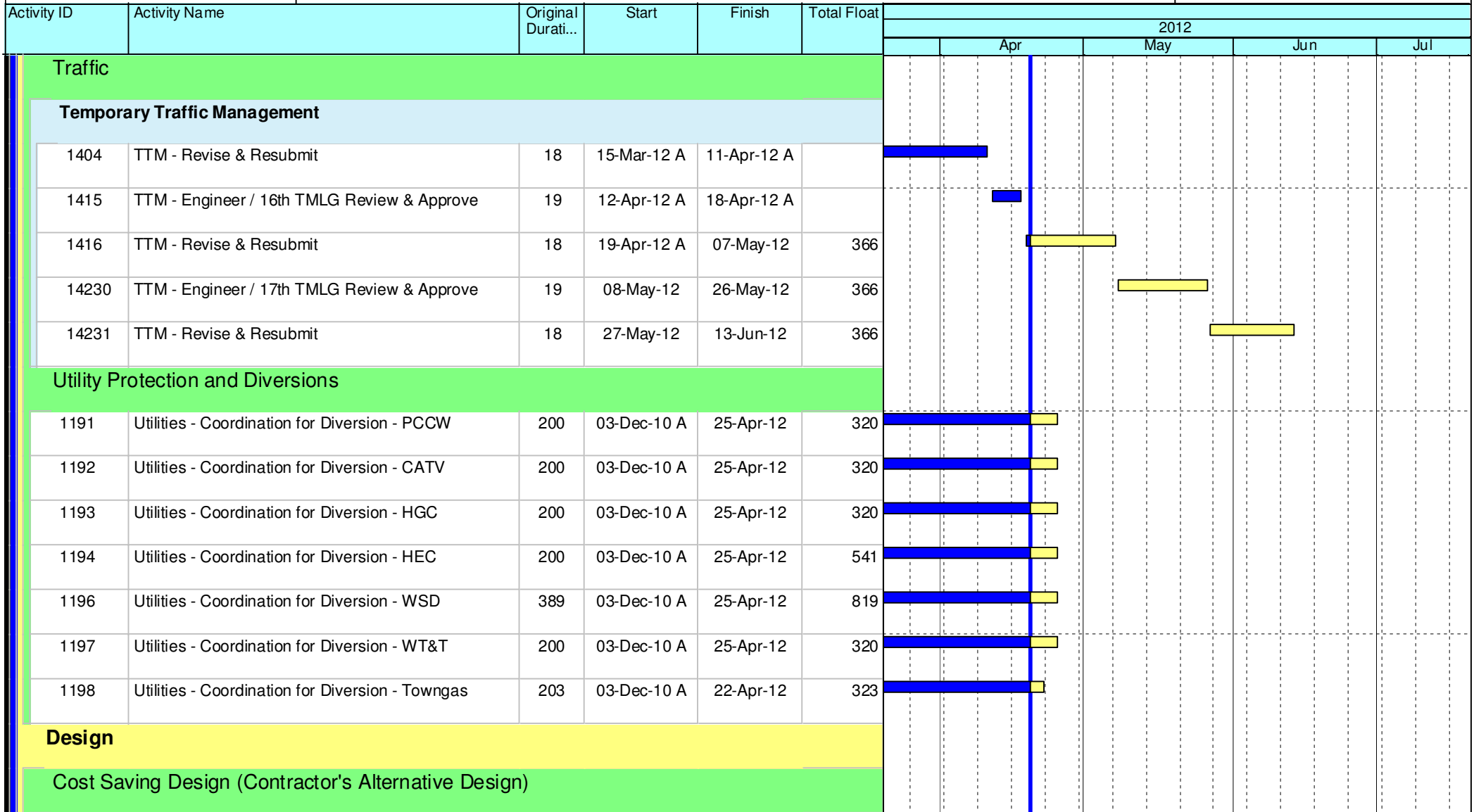
Project ID: U019  
 Baseline: DCP3-3  
 Layout: Update Three Month Rolling U018  
 Page 1 of 12

U019 Programme Update 19 (Apr 2012)			
Date	Revision	Checked	Approv...
21-Apr-12	U019	RC	DS
21-Mar-12	U018	RC	DS

# HY/2009/18 Central - Wan Chai Bypass (Central Interchange)



TASK filters: 3 Months, Not HL.



## Leighton Contractors (Asia) Limited Programme Update 19 (Apr 2012) THREE MONTH ROLLING

Project ID: U019  
 Baseline: DCP3-3  
 Layout: Update Three Month Rolling U018  
 Page 2 of 12

U019 Programme Update 19 (Apr 2012)			
Date	Revision	Checked	Approv...
21-Apr-12	U019	RC	DS
21-Mar-12	U018	RC	DS

Data Date: 20-Apr-12  
 Print Date: 25-Apr-12

## HY/2009/18 Central - Wan Chai Bypass (Central Interchange)

TASK filters: 3 Months, Not HL.



Activity ID	Activity Name	Original Durati...	Start	Finish	Total Float	2012			
						Apr	May	Jun	Jul
3728	CSD - Engineer Review & Approve Alternative Design	28	27-Jan-11 A	25-Apr-12	1740	[Gantt bar spanning from late Jan to mid-Apr]			
<b>Temporary Works Design</b>									
<b>ELS - Approach Ramp (Trough and Retaining Walls)</b>									
1578	ELS - ELS Trough and Retaining Walls Re-Submit Design - Phase 2	12	19-Feb-12 A	15-May-12	138	[Gantt bar from late Feb to mid-May]			
1596	ELS - Resubmit Trough Construction Method Statement	12	17-Mar-12 A	28-Mar-12 A		[Gantt bar from mid-Mar to late Mar]			
1597	ELS - Trough Construction Method Statement Engineer Review & Comment	12	29-Mar-12 A	11-Apr-12 A		[Gantt bar from late Mar to early Apr]			
1579	ELS - ELS Trough and Retaining Walls Engineer Review & Approve - Phase 2	12	16-May-12	27-May-12	138	[Gantt bar from mid-May to late May]			
<b>Utilities Support Bridge (Man Yiu Street)</b>									
1602	USB - Resubmit Cooling Water Main Bridge Design	28	16-Mar-12 A	12-Apr-12 A		[Gantt bar from mid-Mar to early Apr]			
1603	USB - Cooling Water Main Bridge Engineer Review & Approval	28	12-Apr-12 A	17-May-12	108	[Gantt bar from early Apr to mid-May]			
<b>ELS - CWB / Ventilation Building Portion (CH1480 - CH1580)</b>									
1498	ELS - ELS CWB / Top Down Slab Method Statement Engineer Review & Approval	28	09-Mar-12 A	06-May-12	8	[Gantt bar from early Mar to early May]			
1130	ELS - ELS CWB / Ventilation Building Resubmit Method Statement	15	15-Mar-12 A	10-Apr-12 A		[Gantt bar from mid-Mar to early Apr]			
1529	ELS - ELS CWB / Ventilation Building Engineer Review & Approval	28	17-Mar-12 A	30-Apr-12	14	[Gantt bar from late Mar to late Apr]			
1556	ELS - ELS CWB / Vent Building - Engineer Issue Design Change Instruction Ref. <small>CWB/AL/05/26/12/0005/05/00/01/01/00 0000</small>	0		29-Mar-12 A		[Milestone diamond on 29-Mar]			
1557	ELS - ELS CWB / Vent Building - ELS Design Re-Submission (Based On Design Change)	28	30-Mar-12 A	26-Apr-12	1739	[Gantt bar from late Mar to late Apr]			
1132	ELS - ELS CWB / Ventilation Building Engineer Method Statement Review & Approval	28	11-Apr-12 A	29-Apr-12	22	[Gantt bar from early Apr to late Apr]			

- ◆ Current Milestone
- Critical Remaining Work
- Level of Effort
- Remaining Work
- ▲ Baseline Milestone
- Project Baseline
- Actual Work

### Leighton Contractors (Asia) Limited Programme Update 19 (Apr 2012) THREE MONTH ROLLING

Project ID: U019  
 Baseline: DCP3-3  
 Layout: Update Three Month Rolling U018  
 Page 3 of 12

U019 Programme Update 19 (Apr 2012)			
Date	Revision	Checked	Approv...
21-Apr-12	U019	RC	DS
21-Mar-12	U018	RC	DS

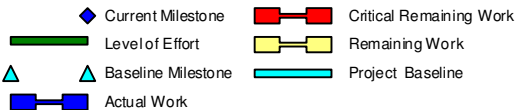


# HY/2009/18 Central - Wan Chai Bypass (Central Interchange)



TASK filters: 3 Months, Not HL.

Activity ID	Activity Name	Original Durati...	Start	Finish	Total Float	2012				
						Apr	May	Jun	Jul	
<b>ELS - CWB Man Yiu Street Portion &amp; Tunnel Modification Works (CH1646 - CH1685)</b>										
3932	ELS - ELS CWB Man Yiu Street Portion Design Resubmission	15	25-Feb-12 A	29-Mar-12 A		█				
1593	ELS - ELS CWB Man Yiu Street Portion Method Statement Resubmission	28	14-Mar-12 A	17-May-12	105	█	█			
3933	ELS - ELS CWB Man Yiu Street Portion Engineer Review & Approve	28	30-Mar-12 A	12-Apr-12 A		█				
1581	ELS - ELS CWB Man Yiu Street Portion Design Resubmission	15	13-Apr-12 A	04-May-12	28		█			
1582	ELS - ELS CWB Man Yiu Street Portion Engineer Review & Approve	28	05-May-12	01-Jun-12	28			█		
1595	ELS - ELS CWB Man Yiu Street Portion Engineer Review & Approve	28	18-May-12	14-Jun-12	105			█		
<b>ELS - CWB Cut &amp; Cover Portion (CH1580 - CH1646)</b>										
1497	ELS - ELS CWB CH1580-CH1646 Portion Re-submit Design	15	17-Feb-12 A	30-Apr-12	17	█	█			
3937	ELS - ELS CWB CH1580-CH1646 Portion Prepare Method Statement	15	01-May-12	15-May-12	17		█			
1496	ELS - ELS CWB CH1580-CH1646 Portion Re-submit Design Engineer Review & Comment	12	01-May-12	12-May-12	48		█			
3939	ELS - ELS CWB CH1580-CH1646 Portion Method Statement Engineer Review & Approval	28	16-May-12	12-Jun-12	17		█	█		
<b>ELS - CWB CRIII Portion (CH1685 - CH1704)</b>										
1604	ELS - ELS CRIII Portion Resubmit Design	28	25-Feb-12 A	29-Mar-12 A		█				
1605	ELS - ELS CRIII Portion Engineer Review & Approve	28	30-Mar-12 A	12-Apr-12 A		█				
1606	ELS - ELS CRIII Portion Resubmit Design	28	12-Apr-12 A	04-May-12	471		█			
3943	ELS - ELS CRIII Portion Prepare Method Statement	15	20-Apr-12	04-May-12	471		█			



## Leighton Contractors (Asia) Limited Programme Update 19 (Apr 2012) THREE MONTH ROLLING

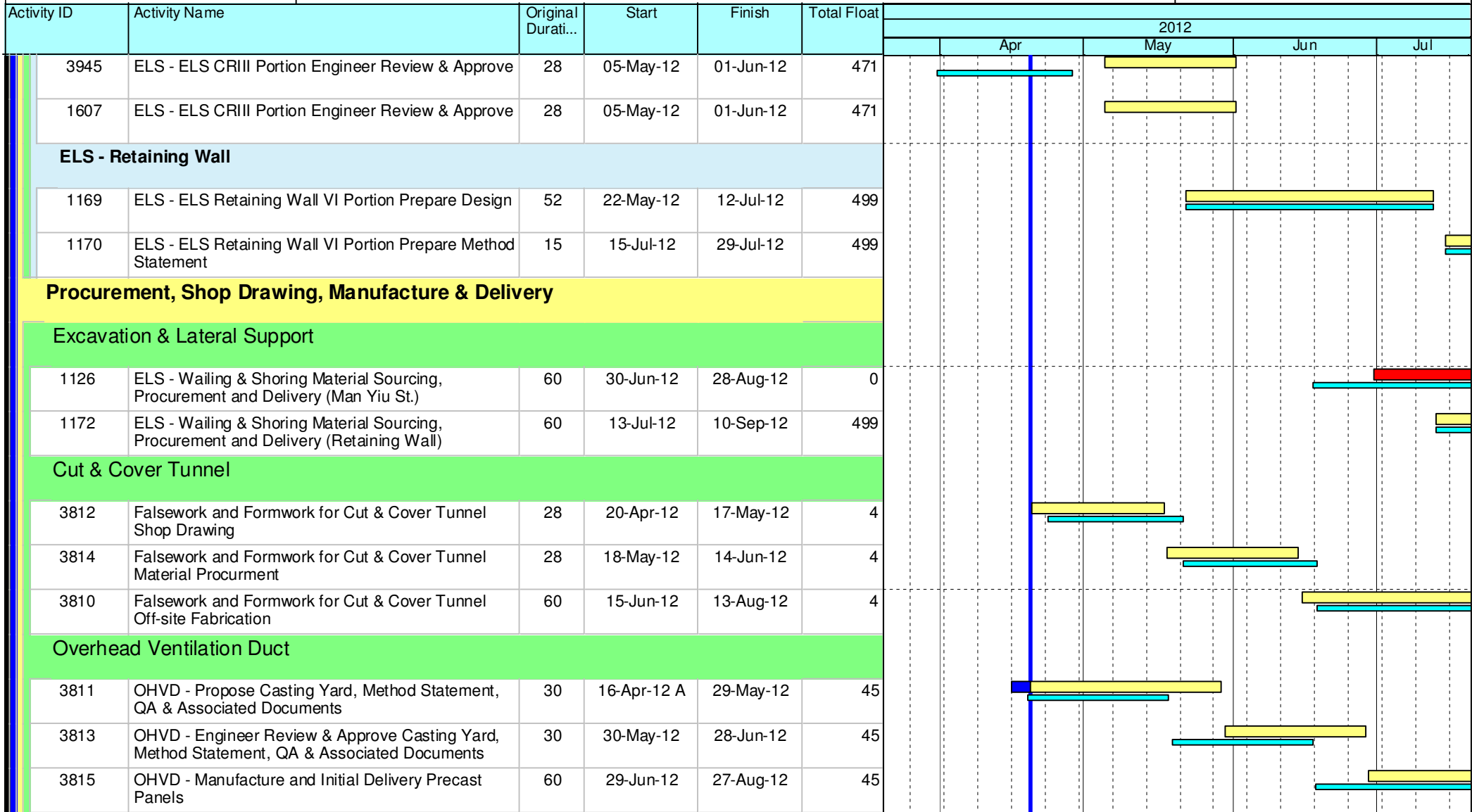
Project ID: U019  
 Baseline: DCP3-3  
 Layout: Update Three Month Rolling U018  
 Page 4 of 12

U019 Programme Update 19 (Apr 2012)			
Date	Revision	Checked	Approv...
21-Apr-12	U019	RC	DS
21-Mar-12	U018	RC	DS

## HY/2009/18 Central - Wan Chai Bypass (Central Interchange)



TASK filters: 3 Months, Not HL.



Current Milestone	Critical Remaining Work
Level of Effort	Remaining Work
Baseline Milestone	Project Baseline
Actual Work	

### Leighton Contractors (Asia) Limited Programme Update 19 (Apr 2012) THREE MONTH ROLLING

Project ID: U019  
 Baseline: DCP3-3  
 Layout: Update Three Month Rolling U018  
 Page 5 of 12

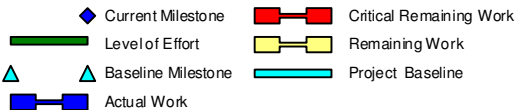
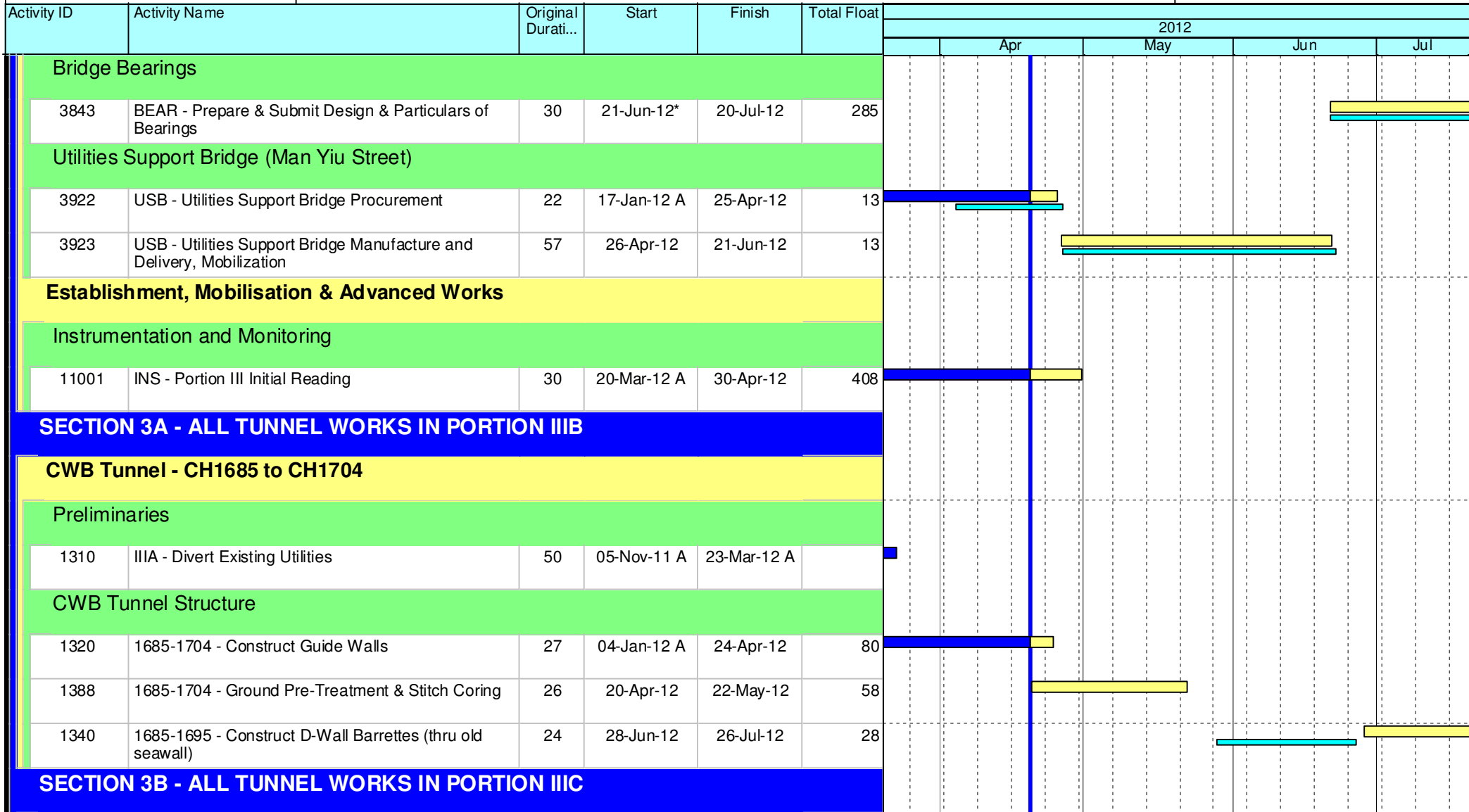
U019 Programme Update 19 (Apr 2012)			
Date	Revision	Checked	Approv...
21-Apr-12	U019	RC	DS
21-Mar-12	U018	RC	DS

Data Date: 20-Apr-12  
 Print Date: 25-Apr-12

## HY/2009/18 Central - Wan Chai Bypass (Central Interchange)



TASK filters: 3 Months, Not HL.



### Leighton Contractors (Asia) Limited Programme Update 19 (Apr 2012) THREE MONTH ROLLING

Project ID: U019  
 Baseline: DCP3-3  
 Layout: Update Three Month Rolling U018  
 Page 6 of 12

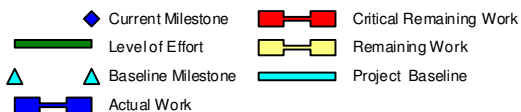
U019 Programme Update 19 (Apr 2012)			
Date	Revision	Checked	Approv...
21-Apr-12	U019	RC	DS
21-Mar-12	U018	RC	DS

# HY/2009/18 Central - Wan Chai Bypass (Central Interchange)



TASK filters: 3 Months, Not HL.

Activity ID	Activity Name	Original Durati...	Start	Finish	Total Float	2012				
						Apr	May	Jun	Jul	
<b>CWB Tunnel - CH1825 to CH2600</b>										
<b>CWB Tunnel Internal Works</b>										
1368	1825-2600 - Access Available via Roof Opening at CH1700	0		20-Apr-12	38					
1370	2213-2600 - Construct Insitu Roof Kickers	78	20-Apr-12	24-Jul-12	38					
<b>SECTION 4B - ALL TUNNEL WORKS IN PORTION IVC, IVD, IVE &amp; IVF</b>										
<b>CWB Tunnel - CH1480 to CH1580</b>										
<b>Preliminaries</b>										
1379	IVC - Temp. Divert Finance St.	12	20-Apr-12	05-May-12	51					
1346	IVC - Reinstate Drainage along Finance Street (Stage 2)	26	07-May-12	05-Jun-12	51					
1352	IVC - Reinstate Finance Street (Stage2 Area)	12	06-Jun-12	19-Jun-12	51					
<b>CWB Tunnel Structure</b>										
11006	1480-1580 - Construct D-Wall / Barrettes (Exclude W2D11)	74	27-Sep-11 A	20-Mar-12 A						
1571	1480-1580 - Sonic Test, Interface Core Test & Full Core Test	24	02-Dec-11 A	24-Apr-12	15					
1409	1480-1580 - Construct D-Wall (W2D11)	10	05-Mar-12 A	20-Mar-12 A						
1468	1480-1580 - Construct D-Wall (W2D18)	10	07-Mar-12 A	20-Mar-12 A						
1411	1480-1580 - Slurry Wall (Ch1480)	15	08-Mar-12 A	30-Mar-12 A						
1491	1480-1580 - Installation of Pump Well	24	09-Mar-12 A	20-Apr-12 A						



## Leighton Contractors (Asia) Limited Programme Update 19 (Apr 2012) THREE MONTH ROLLING

Project ID: U019  
 Baseline: DCP3-3  
 Layout: Update Three Month Rolling U018  
 Page 7 of 12

U019 Programme Update 19 (Apr 2012)			
Date	Revision	Checked	Approv...
21-Apr-12	U019	RC	DS
21-Mar-12	U018	RC	DS

# HY/2009/18 Central - Wan Chai Bypass (Central Interchange)



TASK filters: 3 Months, Not HL.

Activity ID	Activity Name	Original Durati...	Start	Finish	Total Float	2012				
						Apr	May	Jun	Jul	
1408	1480-1580 - Construct D-Wall (W2D8)	11	17-Mar-12 A	31-Mar-12 A						
1575	1480-1580 - Slurry Wall (Ch1580)	14	10-Apr-12 A	23-Apr-12	4					
1347	1480-1580 - Excavate for Top Slabs	18	18-Apr-12 A	08-May-12	5					
1572	1480-1580 - Pump Test	12	24-Apr-12	09-May-12	4					
1349	1480-1580 - Construct Top Slabs	24	09-May-12	05-Jun-12	5					
1580	1480-1580 - Excavate & Lateral Support to Bottom of CWB Tunnel(1480-1600)	100	10-May-12	05-Sep-12	4					
11300	1480-1580 - Excavate 1st Layer	36	10-May-12	20-Jun-12	4					
11320	1480-1580 - Erect 1st Layer Support	33	30-May-12	09-Jul-12	4					
1517	1480-1580 - Excavate 2nd Layer	15	10-Jul-12	26-Jul-12	4					
1519	1480-1580 - Erect 2nd Layer Support	15	17-Jul-12	02-Aug-12	4					

## SECTION 4A - ALL TUNNEL WORKS IN PORTION IVA, IVB, IVG & IVH

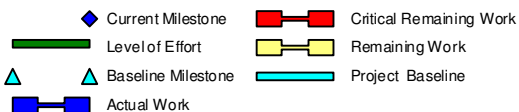
### CWB Tunnel - CH1580 to CH1646

#### Preliminaries

1657	IVA & IVG - Divert Existing Utilities WSD, HGC	26	03-Apr-12 A	10-Apr-12 A						
1566	IVA & IVG - Divert Existing Utilities HEC (Changeover)	29	20-Apr-12	25-May-12	0					

#### CWB Tunnel Structure

1663	1580-1646 - Pre-drilling (Site Investigation) W1D20 - W1D30, BC12 - BC15	30	30-Jul-11 A	30-Mar-12 A						
------	--	----	-------------	-------------	--	--	--	--	--	--



## Leighton Contractors (Asia) Limited Programme Update 19 (Apr 2012) THREE MONTH ROLLING

Project ID: U019  
 Baseline: DCP3-3  
 Layout: Update Three Month Rolling U018  
 Page 8 of 12

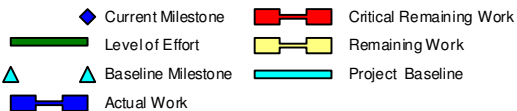
U019 Programme Update 19 (Apr 2012)			
Date	Revision	Checked	Approv...
21-Apr-12	U019	RC	DS
21-Mar-12	U018	RC	DS

# HY/2009/18 Central - Wan Chai Bypass (Central Interchange)



TASK filters: 3 Months, Not HL.

Activity ID	Activity Name	Original Durati...	Start	Finish	Total Float	2012				
						Apr	May	Jun	Jul	
1664	1580-1646 - Construct Guide Walls W1D20 - W1D30, BC12 - BC15	48	30-Jul-11 A	24-Apr-12	29					
1341	1580-1646 - Construct Guide Walls (W2D20 - W2D30) Exclude W2D28	18	12-Dec-11 A	24-Apr-12	41					
1665	1580 - 1646 - Construct D-Wall / Barrettes 1600 - 1646	46	09-Jan-12 A	13-Jun-12	0					
1387	1580 - 1646 - Construct Utilities Bridges	26	08-Mar-12 A	02-Apr-12 A						
1482	1580 - 1646 - Construct D-Wall (W1D24)	5	19-Mar-12 A	24-Mar-12 A						
1487	1580 - 1646 - Construct D-Wall (W2D23)	12	20-Mar-12 A	03-Apr-12 A						
1485	1580 - 1646 - Construct D-Wall (W2D20)	6	22-Mar-12 A	28-Mar-12 A						
1483	1580 - 1646 - Construct D-Wall (W1D23)	14	27-Mar-12 A	19-Apr-12 A						
1488	1580 - 1646 - Construct D-Wall (W2D19)	6	29-Mar-12 A	05-Apr-12 A						
1509	1580 - 1646 - Construct D-Wall (BC13)	16	29-Mar-12 A	05-May-12	1					
1511	1580 - 1646 - Construct D-Wall (BC12)	16	11-Apr-12 A	27-Apr-12	6					
1515	1580 - 1646 - Construct D-Wall (BC11)	14	30-Apr-12	16-May-12	24					
1513	1580 - 1646 - Construct D-Wall (BC14)	12	07-May-12	19-May-12	1					
1666	1580-1646 - Slurry Wall	24	16-May-12	12-Jun-12	1					
1567	1580 - 1646 - Construct D-Wall (W1D30)	8	26-May-12	04-Jun-12	0					
1568	1580 - 1646 - Construct D-Wall (W1D28)	8	29-May-12	06-Jun-12	0					
1569	1580 - 1646 - Construct D-Wall (W1D29)	8	31-May-12	08-Jun-12	0					



## Leighton Contractors (Asia) Limited Programme Update 19 (Apr 2012) THREE MONTH ROLLING

Project ID: U019  
 Baseline: DCP3-3  
 Layout: Update Three Month Rolling U018  
 Page 9 of 12

U019 Programme Update 19 (Apr 2012)			
Date	Revision	Checked	Approv...
21-Apr-12	U019	RC	DS
21-Mar-12	U018	RC	DS

## HY/2009/18 Central - Wan Chai Bypass (Central Interchange)



TASK filters: 3 Months, Not HL.

Activity ID	Activity Name	Original Durati...	Start	Finish	Total Float	2012					
						Apr	May	Jun	Jul		
1573	1580 - 1646 - Construct D-Wall (W2D30)	8	02-Jun-12	11-Jun-12	77						
1574	1580 - 1646 - Construct D-Wall (W2D29)	8	05-Jun-12	13-Jun-12	77						
1667	1580-1646 - Sonic Test, Interface Core Test & Full Core Test	24	14-Jun-12	13-Jul-12	25						
1668	1580-1646 - Pump Test	12	14-Jun-12	28-Jun-12	1						
1391	1580-1646 - Excavate Top Slab	18	29-Jun-12	20-Jul-12	1						
<b>CWB Tunnel - CH1646 to CH1685</b>											
<b>CWB Tunnel Structure</b>											
2540	1646-1685 - Pre-drilling (Site Investigation)	25	15-Dec-11 A	23-Apr-12	9						
2550	1646-1685 - Construct Guide Walls	25	20-Apr-12	21-May-12	4						
1389	1646-1685 - Ground Treatment	12	24-Apr-12	09-May-12	14						
2560	1646-1685 - Construct Barrettes BC16-BC18, BC21, BC22	27	26-May-12	27-Jun-12	0						
1561	1646-1685 - Construct Barrettes BC21	12	26-May-12	08-Jun-12	0						
1562	1646-1685 - Construct Barrettes BC22	12	30-May-12	12-Jun-12	66						
1563	1646-1685 - Construct Barrettes BC16	12	04-Jun-12	16-Jun-12	66						
1564	1646-1685 - Construct Barrettes BC17	12	08-Jun-12	21-Jun-12	66						
2705	1646-1685 - Install Pipe/Sheet Pile Wall	50	09-Jun-12	08-Aug-12	0						
1565	1646-1685 - Construct Barrettes BC18	12	13-Jun-12	27-Jun-12	66						

◆ Current Milestone     ■ Critical Remaining Work  
■ Level of Effort     ■ Remaining Work  
▲ Baseline Milestone     ■ Project Baseline  
■ Actual Work

### Leighton Contractors (Asia) Limited Programme Update 19 (Apr 2012) THREE MONTH ROLLING

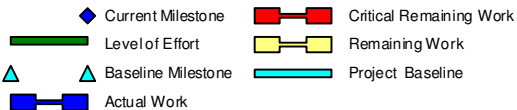
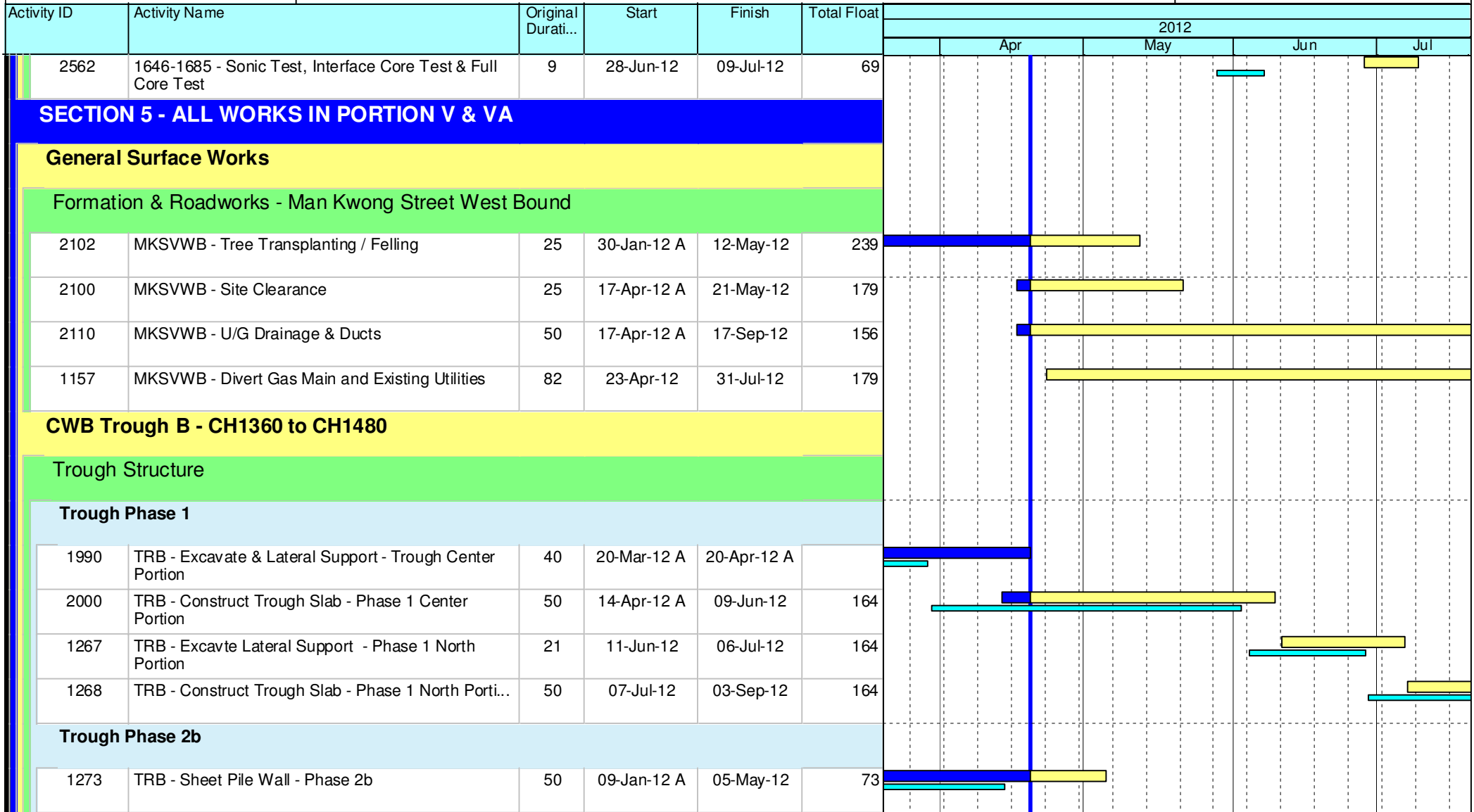
Project ID: U019  
 Baseline: DCP3-3  
 Layout: Update Three Month Rolling U018  
 Page 10 of 12

U019 Programme Update 19 (Apr 2012)			
Date	Revision	Checked	Approv...
21-Apr-12	U019	RC	DS
21-Mar-12	U018	RC	DS

# HY/2009/18 Central - Wan Chai Bypass (Central Interchange)



TASK filters: 3 Months, Not HL.



## Leighton Contractors (Asia) Limited Programme Update 19 (Apr 2012) THREE MONTH ROLLING

Project ID: U019  
 Baseline: DCP3-3  
 Layout: Update Three Month Rolling U018  
 Page 11 of 12

U019 Programme Update 19 (Apr 2012)			
Date	Revision	Checked	Approv...
21-Apr-12	U019	RC	DS
21-Mar-12	U018	RC	DS

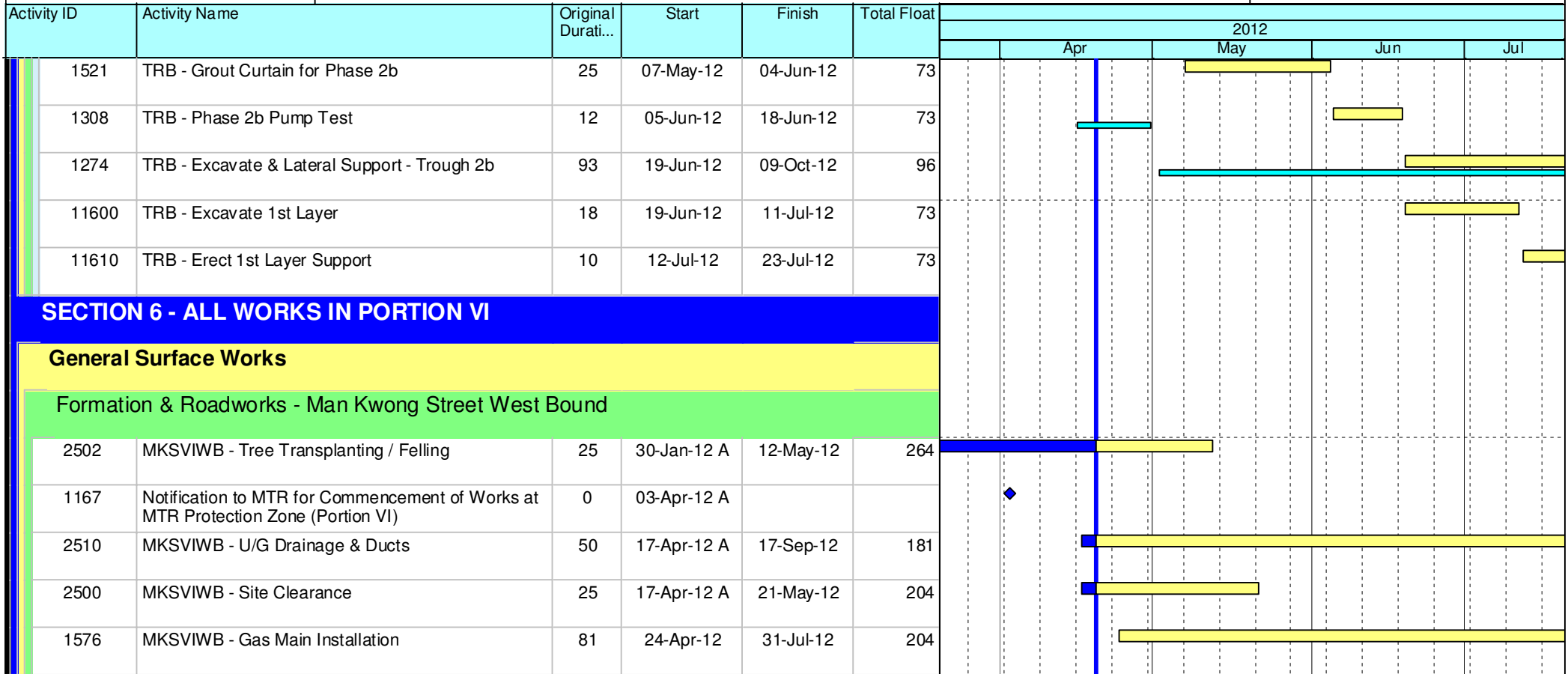


Data Date: 20-Apr-12  
 Print Date: 25-Apr-12

# HY/2009/18 Central - Wan Chai Bypass (Central Interchange)



TASK filters: 3 Months, Not HL.



- Current Milestone
- Critical Remaining Work
- Level of Effort
- Remaining Work
- Baseline Milestone
- Project Baseline
- Actual Work

## Leighton Contractors (Asia) Limited Programme Update 19 (Apr 2012) THREE MONTH ROLLING

Project ID: U019  
 Baseline: DCP3-3  
 Layout: Update Three Month Rolling U018  
 Page 12 of 12

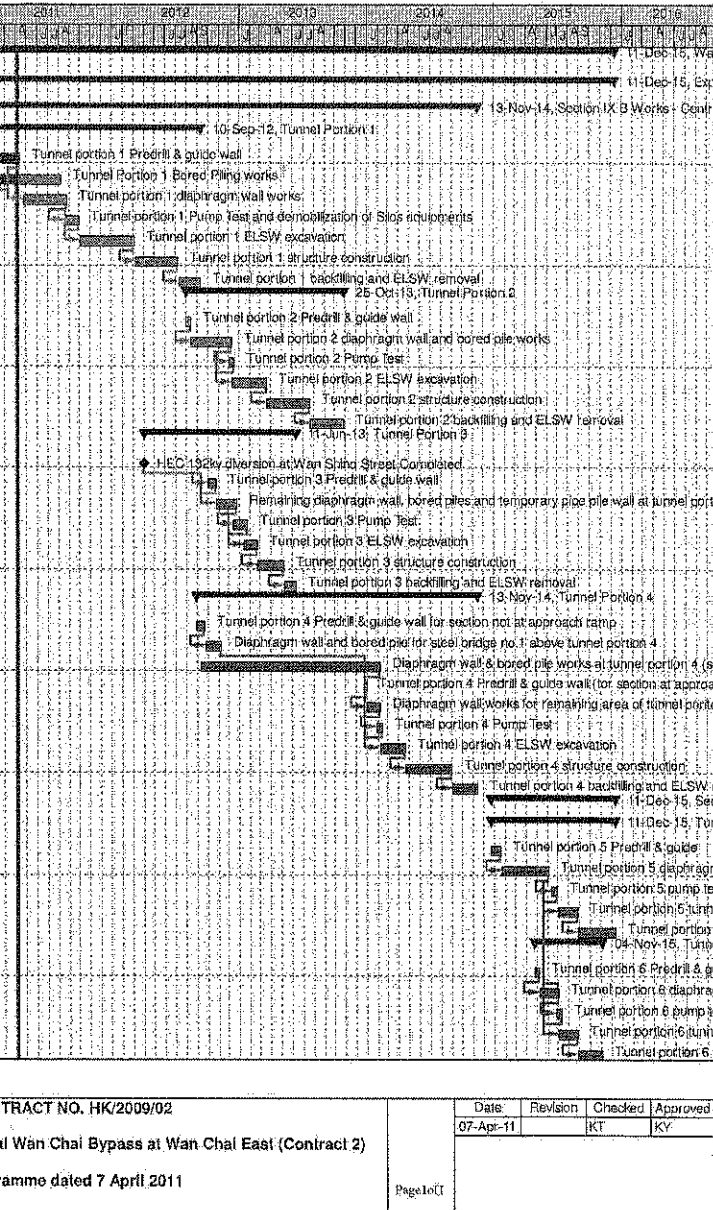
U019 Programme Update 19 (Apr 2012)			
Date	Revision	Checked	Approv...
21-Apr-12	U019	RC	DS
21-Mar-12	U018	RC	DS



Wan Chai Development Phase II - Central - Wan Chai  
Bypass at Wan Chai East CONTRACT HK/2009/02

CHUN WO - CRGL JV

Activity ID	Activity Name	OD	Start	Finish	% Planned	2011	2012	2013	2014	2015	2016
<b>Wan Chai Development Phase II - Central - Wan Chai Bypass at Wan Chai East</b>											
<b>Expanded and More Detailed Initial Works Programme</b>											
Section IX B Works - Central - Wan Chai Bypass Tunnel Structure from chainage 3400 to eastern tunnel											
<b>Tunnel Portion 1</b>											
S9B-T1-0005	Tunnel portion 1 Predrill & guide wall	10	18-Feb-11	13-Apr-11	40%						
S9B-T1-0007	Tunnel Portion 1 Bored Piling works	105	09-Feb-11	08-Aug-11	0%						
S9B-T1-0010	Tunnel portion 1 diaphragm wall works	105	26-Apr-11	27-Aug-11	0%						
S9B-T1-0015	Tunnel portion 1 Pump Test and demobilization of Slos equipments	35	20-Aug-11	30-Sep-11	0%						
S9B-T1-0020	Tunnel portion 1 ELSW excavation	130	03-Oct-11	07-Mar-12	0%						
S9B-T1-0030	Tunnel portion 1 structure construction	100	09-Mar-12	09-Jul-12	0%						
S9B-T1-0040	Tunnel portion 1 backfilling and ELSW removal	54	10-Jul-12	10-Sep-12	0%						
<b>Tunnel Portion 2</b>											
S9B-T2-0105	Tunnel portion 2 Predrill & guide wall	10	02-Aug-12	13-Aug-12	0%						
S9B-T2-0010	Tunnel portion 2 diaphragm wall and bored pile works	100	14-Aug-12	10-Dec-12	0%						
S9B-T2-0015	Tunnel portion 2 Pump Test	14	03-Dec-12	18-Dec-12	0%						
S9B-T2-0020	Tunnel portion 2 ELSW excavation	80	11-Dec-12	19-Mar-13	0%						
S9B-T2-0030	Tunnel portion 2 structure construction	100	20-Mar-13	22-Jul-13	0%						
S9B-T2-0040	Tunnel portion 2 backfilling and ELSW removal	80	23-Jul-13	25-Oct-13	0%						
<b>Tunnel Portion 3</b>											
S9B-T3-0005	HEC 132kv diversion at Wan Shing Street Completed	0	01-Apr-12*		0%						
S9B-T3-0008	Tunnel portion 3 Predrill & guide wall	20	02-Oct-12	25-Oct-12	0%						
S9B-T3-0010	Remaining diaphragm wall, bored piles and temporary pipe pile wall at tunnel portion 3.	50	25-Oct-12	22-Dec-12	0%						
S9B-T3-0015	Tunnel portion 3 Pump Test	30	15-Dec-12	22-Jan-13	0%						
S9B-T3-0020	Tunnel portion 3 ELSW excavation	30	15-Jan-13	20-Feb-13	0%						
S9B-T3-0030	Tunnel portion 3 structure construction	80	21-Feb-13	08-May-13	0%						
S9B-T3-0040	Tunnel portion 3 backfilling and ELSW removal	30	07-May-13	11-Jun-13	0%						
<b>Tunnel Portion 4</b>											
S9B-T4-0005	Tunnel portion 4 Predrill & guide wall for section not at approach ramp	21	30-Aug-12	22-Sep-12	0%						
S9B-T4-0010	Diaphragm wall and bored pile for steel bridge no.1 above tunnel portion 4	40	24-Sep-12	10-Nov-12	0%						
S9B-T4-0020	Diaphragm wall & bored pile works at tunnel portion 4 (section not at approach ramp)	420	11-Sep-12	05-Feb-14	0%						
S9B-T4-0025	Tunnel portion 4 Predrill & guide wall (for section at approach ramp)	5	23-Dec-13	30-Dec-13	0%						
S9B-T4-0030	Diaphragm wall works for remaining area of tunnel portion 4 (for section at approach ramp)	30	31-Dec-13	06-Feb-14	0%						
S9B-T4-0035	Tunnel portion 4 Pump Test	14	28-Jan-14	14-Feb-14	0%						
S9B-T4-0040	Tunnel portion 4 ELSW excavation	60	07-Feb-14	19-Apr-14	0%						
S9B-T4-0050	Tunnel portion 4 structure construction	110	22-Apr-14	01-Sep-14	0%						
S9B-T4-0060	Tunnel portion 4 backfilling and ELSW removal	60	02-Sep-14	13-Nov-14	0%						
Section X Works - Central - Wan Chai Bypass Tunnel Structure from western tunnel to chainage 3400											
<b>Tunnel Portion 5</b>											
S10-T5-0005	Tunnel portion 5 Predrill & guide	21	23-Dec-14	19-Jan-15	0%						
S10-T5-0010	Tunnel portion 5 diaphragm wall & bored pile works	110	20-Jan-15	04-Jun-15	0%						
S10-T5-0015	Tunnel portion 5 pump test	14	13-Jun-15	30-Jun-15	0%						
S10-T5-0020	Tunnel portion 5 tunnel ELSW excavation	45	04-Jul-15	25-Aug-15	0%						
S10-T5-0030	Tunnel portion 5 tunnel structure construction	90	26-Aug-15	11-Dec-15	0%						
<b>Tunnel Portion 6</b>											
S10-T6-0040	Tunnel portion 6 Predrill & guide	12	24-Apr-15	08-May-15	0%						
S10-T6-0050	Tunnel portion 6 diaphragm wall & bored pile works at Area 10	45	09-May-15	09-Jul-15	0%						
S10-T6-0055	Tunnel portion 6 pump test	14	25-Jun-15	11-Jul-15	0%						
S10-T6-0060	Tunnel portion 6 tunnel ELSW excavation at Area 10	45	04-Jul-15	26-Aug-15	0%						
S10-T6-0070	Tunnel portion 6 tunnel structure construction at Area 10	58	26-Aug-15	04-Nov-15	0%						



後和 - 中國中鐵聯合  
 Chun Wo - CRGL JOINT VENTURE

Remaining Level of Effort Milestone  
 Actual Level of Effort Summary  
 Actual Work   
 Remaining Work   
 Critical Remaining Work

CEDD CONTRACT NO. HK/2009/02  
 Wan Chai Development Phase II - Central Wan Chai Bypass at Wan Chai East (Contract 2)  
 Revised Programme dated 7 April 2011

Date	Revision	Checked	Approved
07-Apr-11		KT	KY

Page 10 of 11

Activity ID	Activity Name	Rem Dur	Start	Finish	2012																
					June					July					August					September	
					21	28	04	11	18	25	02	09	16	23	30	06	13	20	27	03	10
<b>3MRP - JUN 2012 to SEP 2012</b>																					
<b>01 - CONTRACT DATES</b>																					
<b>01.2 - Possession of Site</b>																					
0120-2600	Possession to Portion VIIIA	0	29-Jul-12*		◆ Possession to Portion VIIIA																
0120-2700	Possession to Portion VIIIB	0	29-Jul-12*		◆ Possession to Portion VIIIB																
0120-2800	Possession to Portion IXA	0	29-Jul-12*		◆ Possession to Portion IXA																
0120-2900	Possession to Portion IXB	0	29-Jul-12*		◆ Possession to Portion IXB																
<b>02 - PRE-CONSTRUCTION WORKS</b>																					
<b>02.2 - Contractor's Submission</b>																					
0220-1250	Concrete Ready Mix/Design Mix - Concrete Plant Trials & Approval	8	04-Aug-11 A	27-Jun-12	Concrete Ready Mix/Design Mix - Concrete Plant Trials & Approval																
0220-1300	Drainage Pipes & Materials - Procurement & Delivery	14	20-Jun-12	03-Jul-12	Drainage Pipes & Materials - Procurement & Delivery																
0220-1360	Tunnel Structures Materials - Submission	28	02-Jul-12*	29-Jul-12	Tunnel Structures Materials - Submission																
0220-1370	Tunnel Structures Materials - ER Review/Comment	28	30-Jul-12	26-Aug-12	Tunnel Structures Materials - ER Review/Comment																
0220-1380	Tunnel Structures Materials - Resubmission	14	27-Aug-12	09-Sep-12	Tunnel Structures Materials - Resubmission																
0220-1390	Tunnel Structures Materials - ER Approval	21	10-Sep-12	30-Sep-12	Tunnel Structures Materials - ER Approval																
0220-1460	Bridge Bearing - Submission	15	10-Oct-11 A	15-Aug-12	Bridge Bearing - Submission																
0220-1470	Bridge Bearing - ER Review/Comment	28	16-Aug-12	12-Sep-12	Bridge Bearing - ER Review/Comment																
0220-1510	Road Work Materials/Street Furnitures - Submission	75	01-Sep-12*	14-Nov-12	Road Work Materials/Street Furnitures - Submission																
<b>02.3 - Method Statement / Shop Drawings</b>																					
0230-1260	MS Cut & Cover Tunnel - Submission	14	21-Mar-12 A	03-Jul-12	MS Cut & Cover Tunnel - Submission																
0230-1270	MS Cut & Cover Tunnel - ER Review & Comment	28	04-Jul-12	31-Jul-12	MS Cut & Cover Tunnel - ER Review & Comment																
0230-1280	MS Cut & Cover Tunnel - Resubmission	28	01-Aug-12	28-Aug-12	MS Cut & Cover Tunnel - Resubmission																
0230-1290	MS Cut & Cover Tunnel - ER Approval	28	29-Aug-12	25-Sep-12	MS Cut & Cover Tunnel - ER Approval																
0230-1340	MS Pre-cast Segment Bridge - Submission	28	01-Aug-12*	28-Aug-12	MS Pre-cast Segment Bridge - Submission																
0230-1350	MS Pre-cast Segment Bridge - ER Review & Comment	28	29-Aug-12	25-Sep-12	MS Pre-cast Segment Bridge - ER Review & Comment																
0230-1460	MS Stressing/Destressing Tendons - Submission	28	01-Aug-12*	28-Aug-12	MS Stressing/Destressing Tendons - Submission																
0230-1470	MS Stressing/Destressing Tendons - ER Review & Comment	28	29-Aug-12	25-Sep-12	MS Stressing/Destressing Tendons - ER Review & Comment																
0230-1560	MS Precasting of Bridge Segment & Beam - Resubmission	9	02-Apr-12 A	28-Jun-12	MS Precasting of Bridge Segment & Beam - Resubmission																
0230-1570	MS Precasting of Bridge Segment & Beam - ER Approval	20	12-Apr-12 A	09-Jul-12	MS Precasting of Bridge Segment & Beam - ER Approval																
0230-1700	MS Temporary Bridge TA - Submission	28	01-Aug-12*	28-Aug-12	MS Temporary Bridge TA - Submission																
0230-1710	MS Temporary Bridge TA - ER Review & Comment	28	29-Aug-12	25-Sep-12	MS Temporary Bridge TA - ER Review & Comment																
0230-1580	MS Interim & Permanent Noise Semi Enclosure - Submission	28	11-Sep-12	08-Oct-12	MS Interim & Permanent Noise Semi Enclosure - Submission																
<b>02.4 - Contractor's Design and Build Items</b>																					
0240-1010	Temp Bridge "TA" Design - Prep & Submit	36	16-Dec-11 A	25-Jul-12	Temp Bridge "TA" Design - Prep & Submit																
0240-1020	Temp Bridge "TA" Design - ER review and comment	28	26-Jul-12	22-Aug-12	Temp Bridge "TA" Design - ER review and comment																
0240-1030	Temp Bridge "TA" Design - Resubmission	60	23-Aug-12	21-Oct-12	Temp Bridge "TA" Design - Resubmission																
0240-1041	Temp Bridge "TD" Design - Prep & Submit	120	01-Aug-12*	28-Nov-12	Temp Bridge "TD" Design - Prep & Submit																
0240-1090	Int. Noise Enclosure Design - Public Consultation	45	29-Jul-11 A	03-Aug-12	Int. Noise Enclosure Design - Public Consultation																
0240-1095	Int. Noise Enclosure Design - ACABAS/ER Consultation/Submission	63	16-Dec-11 A	21-Aug-12	Int. Noise Enclosure Design - ACABAS/ER Consultation/Submission																
0240-1100	Int. Noise Enclosure Design - ER review & comment	28	22-Aug-12	18-Sep-12	Int. Noise Enclosure Design - ER review & comment																
0240-1120	Noise Barrier Design - Public Consultation	45	29-Jul-11 A	03-Aug-12	Noise Barrier Design - Public Consultation																
0240-1122	Noise Barrier Design - ACABAS/ER Consultation/Submission	63	16-Dec-11 A	21-Aug-12	Noise Barrier Design - ACABAS/ER Consultation/Submission																
0240-1124	Noise Barrier Design - ER review & comment	28	22-Aug-12	18-Sep-12	Noise Barrier Design - ER review & comment																
0240-1130	Perm. Noise Enclosure Design - Public Consultation	126	14-Feb-12 A	23-Oct-12	Perm. Noise Enclosure Design - Public Consultation																

- Remaining Level of Effort
- Actual Level of Effort
- Actual Work
- Remaining Work
- Critical Remaining Work
- ◆ Milestone

**Contract HY/2009/19**

**Three Month Rolling Programme (20 JUN 2012 to 19 SEP 2012)**

3MRP

3MRP - JUN 2012 to SEP 2012

Page 1 of 7

Activity ID	Activity Name	Rem Dur	Start	Finish	2012																
					June					July					August					September	
					21	28	04	11	18	25	02	09	16	23	30	06	13	20	27	03	10
0240-1135	Perm. Noise Enclosure Design - ACABAS/ER Consultation/Submission	90	20-Jun-12	17-Sep-12	[Gantt bar: 20-Jun-12 to 17-Sep-12]																
0240-1260	Landscaping Design - Public Consultation	180	12-Aug-12	07-Feb-13	[Gantt bar: 12-Aug-12 to 07-Feb-13]																
0240-1050	Temp Bridge "TB" & "TC" Design - Prep & Submit	120	01-Sep-12*	29-Dec-12	[Gantt bar: 01-Sep-12 to 29-Dec-12]																
<b>02.5 - Bridge Segment/Beam Off-site Precasting</b>																					
0250-1030	Segment/Beam - Precast Yard Establishment Works	25	21-May-12 A	15-Jul-12	[Gantt bar: 21-May-12 to 15-Jul-12]																
0250-1050	Segment/Beam - Mould Fabrication	34	14-May-12 A	23-Jul-12	[Gantt bar: 14-May-12 to 23-Jul-12]																
0250-1100	Segment/Beam - Geometry Control Design Approval	20	14-Dec-11 A	09-Jul-12	[Gantt bar: 14-Dec-11 to 09-Jul-12]																
0250-1040	Segment/Beam - Precast Yard Set-up Survey Station	18	27-Jun-12	15-Jul-12	[Gantt bar: 27-Jun-12 to 15-Jul-12]																
0250-1060	Segment/Beam - Precasting of 1st Segment / Trial Segment	12	23-Jul-12	04-Aug-12	[Gantt bar: 23-Jul-12 to 04-Aug-12]																
0250-1500	Ready for Mass Production of Bridge Segment/Beam	0		04-Aug-12	[Milestone: 04-Aug-12]																
0250-1600	Bridge Precast Segment Casting & Delivery for E/B Bridge	280	04-Aug-12	11-May-13	[Gantt bar: 04-Aug-12 to 11-May-13]																
<b>05 - SECTION 2 &amp; 2A OF THE WORKS</b>																					
<b>05.1 - Cut &amp; Cover Tunnel Ch 4855-4932 (APS Footprint)</b>																					
<b>05.1.1 - D-Wall Construction</b>																					
0511-1010	Site Survey & Setting Out (Portion VIIIA and IXA)	3	30-Jul-12	01-Aug-12	[Gantt bar: 30-Jul-12 to 01-Aug-12]																
0511-1020	Site Establishment (Portion VIIIA and IXA)	28	30-Jul-12	30-Aug-12	[Gantt bar: 30-Jul-12 to 30-Aug-12]																
0511-1085	D-Wall G.I. N46-N51/S48-S55/BC39 Prelim Report / Founding Level	15	17-Aug-12	03-Sep-12	[Gantt bar: 17-Aug-12 to 03-Sep-12]																
0511-1090	D-Wall G.I. N46-N51/S48-S55/BC39 Final Report / Founding Level	42	04-Sep-12	24-Oct-12	[Gantt bar: 04-Sep-12 to 24-Oct-12]																
0511-1030	D-wall N46-N51 Pre-drilling (6 nos@6d - 3 rigs)	12	31-Jul-12	13-Aug-12	[Gantt bar: 31-Jul-12 to 13-Aug-12]																
0511-1035	D-wall N46-N51 Grouting for Existing Seawall Rubble Mound	18	14-Aug-12	03-Sep-12	[Gantt bar: 14-Aug-12 to 03-Sep-12]																
0511-1040	D-wall N46-N51 Guide Wall	12	04-Sep-12	17-Sep-12	[Gantt bar: 04-Sep-12 to 17-Sep-12]																
0511-1060	D-wall S48-S55 + BC39 Pre-drilling (9 nos@3d - 3 rigs)	15	31-Jul-12	16-Aug-12	[Gantt bar: 31-Jul-12 to 16-Aug-12]																
0511-1065	D-wall S48-S55 + BC39 Guide Wall	12	17-Aug-12	30-Aug-12	[Gantt bar: 17-Aug-12 to 30-Aug-12]																
0511-1075	Barrette BC39 Grouting for Existing Seawall Rubble Mound	6	31-Aug-12	06-Sep-12	[Gantt bar: 31-Aug-12 to 06-Sep-12]																
0511-1070	D-wall S48-S55 Construction (8 nos@6d - 1 set)	56	07-Sep-12	13-Nov-12	[Gantt bar: 07-Sep-12 to 13-Nov-12]																
0511-1080	Barrette BC39 Construction (1 no@6d - 1 set)	7	07-Sep-12	14-Sep-12	[Gantt bar: 07-Sep-12 to 14-Sep-12]																
<b>05.2 - Cut &amp; Cover Tunnel Ch 4932-5149</b>																					
<b>05.2.1 - D-Wall Construction</b>																					
0521-1790.10	D-wall Panel N74A (6m - 590cu.m)	10	18-Jun-12 A	03-Jul-12	[Gantt bar: 18-Jun-12 to 03-Jul-12]																
0521-1990.53	Existing Utilities Diversion for S81 to S84	0	21-May-12 A	06-Jun-12 A	[Gantt bar: 21-May-12 to 06-Jun-12]																
0521-1990.63	Guide Wall Construction for S81 to S84	7	07-Jun-12 A	28-Jun-12	[Gantt bar: 07-Jun-12 to 28-Jun-12]																
0521-1990.25	D-wall South Panel S93	0	22-May-12 A	05-Jun-12 A	[Gantt bar: 22-May-12 to 05-Jun-12]																
0521-1990.28	D-wall South Panel S88	0	26-May-12 A	11-Jun-12 A	[Gantt bar: 26-May-12 to 11-Jun-12]																
0521-1990.29	D-wall South Panel S85	0	14-May-12 A	28-May-12 A	[Gantt bar: 14-May-12 to 28-May-12]																
0521-1990.26	D-wall South Panel S89	14	18-Jun-12 A	07-Jul-12	[Gantt bar: 18-Jun-12 to 07-Jul-12]																
0521-1990.33	D-wall South Panel S84	2	11-Jun-12 A	21-Jun-12	[Gantt bar: 11-Jun-12 to 21-Jun-12]																
0521-1990.20	D-wall South Panel S83	10	28-Jun-12	11-Jul-12	[Gantt bar: 28-Jun-12 to 11-Jul-12]																
0521-1990.27	D-wall South Panel S81	10	11-Jul-12	23-Jul-12	[Gantt bar: 11-Jul-12 to 23-Jul-12]																
0521-1990.24	D-wall South Panel S82	10	23-Jul-12	03-Aug-12	[Gantt bar: 23-Jul-12 to 03-Aug-12]																
0521-1945.10	Temp Bulk Headhead TBW1	7	03-Aug-12	11-Aug-12	[Gantt bar: 03-Aug-12 to 11-Aug-12]																
0521-1945.15	Temp Bulk Headhead TBW3	7	11-Aug-12	20-Aug-12	[Gantt bar: 11-Aug-12 to 20-Aug-12]																
0521-1945.20	Temp Bulk Headhead TBW5	7	20-Aug-12	28-Aug-12	[Gantt bar: 20-Aug-12 to 28-Aug-12]																
0521-1945.25	Temp Bulk Headhead TBW2	7	28-Aug-12	05-Sep-12	[Gantt bar: 28-Aug-12 to 05-Sep-12]																
0521-1945.30	Temp Bulk Headhead TBW4	7	05-Sep-12	13-Sep-12	[Gantt bar: 05-Sep-12 to 13-Sep-12]																

- Remaining Level of Effort
- Actual Level of Effort
- Actual Work
- Remaining Work
- Critical Remaining Work
- ◆ Milestone

**Contract HY/2009/19**

**Three Month Rolling Programme (20 JUN 2012 to 19 SEP 2012)**

3MRP

3MRP - JUN 2012 to SEP 2012

Activity ID	Activity Name	Rem Dur	Start	Finish	2012																
					June					July					August					September	
					21	28	04	11	18	25	02	09	16	23	30	06	13	20	27	03	10
0521-1810	D-wall N59-N70 Grouting for Existing Seawall Rubble Mound	0	27-Apr-12 A	05-Jun-12 A	D-wall N59-N70 Grouting for Existing Seawall Rubble Mound																
0521-1840	D-wall N52-N58 Pre-drilling (7 nos@6d - 2 rig)	0	09-Apr-12 A	30-May-12 A	D-wall N52-N58 Pre-drilling (7 nos@6d - 2 rig)																
0521-1850	D-wall N52-N58 Grouting for Existing Seawall Rubble Mound	0	03-May-12 A	05-Jun-12 A	D-wall N52-N58 Grouting for Existing Seawall Rubble Mound																
0521-1860	D-wall N52-N58 Guide Wall	0	31-May-12 A	13-Jun-12 A	D-wall N52-N58 Guide Wall																
0521-1820	D-wall N59-N70 Guide Wall	6	09-Apr-12 A	27-Jun-12	D-wall N59-N70 Guide Wall																
0521-1830.15	D-wall Panel N69 (6m - 621cu.m)	0	09-May-12 A	02-Jun-12 A	D-wall Panel N69 (6m - 621cu.m)																
0521-1830.10	D-wall Panel N68 (3.95m - 409cu.m)	4	05-Jun-12 A	25-Jun-12	D-wall Panel N68 (3.95m - 409cu.m)																
0521-1835.10	D-wall Panel N55 (5.6m - 529cu.m)	9	08-Jun-12 A	30-Jun-12	D-wall Panel N55 (5.6m - 529cu.m)																
0521-1830.25	D-wall Panel N67 (3.95m - 409cu.m)	10	28-Jun-12	10-Jul-12	D-wall Panel N67 (3.95m - 409cu.m)																
0521-1835.15	D-wall Panel N59 (5.6m - 529cu.m)	10	06-Jul-12	17-Jul-12	D-wall Panel N59 (5.6m - 529cu.m)																
0521-1830.35	D-wall Panel N65 (5.7m - 590cu.m)	10	11-Jul-12	21-Jul-12	D-wall Panel N65 (5.7m - 590cu.m)																
0521-1835.20	D-wall Panel N52 (5.6m - 529cu.m)	10	18-Jul-12	28-Jul-12	D-wall Panel N52 (5.6m - 529cu.m)																
0521-1830.20	D-wall Panel N70 (6m - 630cum)	10	23-Jul-12	02-Aug-12	D-wall Panel N70 (6m - 630cum)																
0521-1835.25	D-wall Panel N63 (5.6m - 529cu.m)	10	30-Jul-12	09-Aug-12	D-wall Panel N63 (5.6m - 529cu.m)																
0521-1830.30	D-wall Panel N66 (4.75m - 492cu.m)	10	06-Aug-12	16-Aug-12	D-wall Panel N66 (4.75m - 492cu.m)																
0521-1835.30	D-wall Panel N58 (5.6m - 529cu.m)	10	16-Aug-12	27-Aug-12	D-wall Panel N58 (5.6m - 529cu.m)																
0521-1835.35	D-wall Panel N62 (5.6m - 529cu.m)	10	25-Aug-12	05-Sep-12	D-wall Panel N62 (5.6m - 529cu.m)																
0521-1835.40	D-wall Panel N54 (3.77m - 355cu.m)	10	04-Sep-12	14-Sep-12	D-wall Panel N54 (3.77m - 355cu.m)																
0521-1990.36	D-wall South Panel S76	6	08-Jun-12 A	27-Jun-12	D-wall South Panel S76																
0521-2070	D-wall S66-S77 Guide Wall	9	16-May-12 A	30-Jun-12	D-wall S66-S77 Guide Wall																
0521-1990.39	D-wall South Panel S74	10	22-Jun-12	05-Jul-12	D-wall South Panel S74																
0521-1990.42	D-wall South Panel S75	0	24-May-12 A	09-Jun-12 A	D-wall South Panel S75																
0521-1990.43	D-wall South Panel S77	10	06-Jul-12	17-Jul-12	D-wall South Panel S77																
0521-1990.34	D-wall South Panel S68	10	18-Jul-12	28-Jul-12	D-wall South Panel S68																
0521-1990.40	D-wall South Panel S73	10	30-Jul-12	09-Aug-12	D-wall South Panel S73																
0521-1990.35	D-wall South Panel S69	10	07-Aug-12	17-Aug-12	D-wall South Panel S69																
0521-1990.38	D-wall South Panel S72	10	15-Aug-12	25-Aug-12	D-wall South Panel S72																
0521-1990.41	D-wall South Panel S70	10	23-Aug-12	03-Sep-12	D-wall South Panel S70																
0521-2090	D-wall S60-S65 Pre-drilling	18	27-Feb-12 A	12-Jul-12	D-wall S60-S65 Pre-drilling																
0521-2100	D-wall S60-S65 Guide Wall	15	13-Jul-12	30-Jul-12	D-wall S60-S65 Guide Wall																
0521-2130	D-wall S56-S59 Guide Wall	15	21-Jul-12	07-Aug-12	D-wall S56-S59 Guide Wall																
<b>05.2.2 - Barrette Construction</b>																					
0522-2210.57	Barrette Pile BC57	0	07-May-12 A	25-May-12 A	Barrette Pile BC57																
0522-2210.61	Barrette Pile BC61	0	21-May-12 A	31-May-12 A	Barrette Pile BC61																
0522-2210.65	Barrette Pile BC65	0	16-May-12 A	26-May-12 A	Barrette Pile BC65																
0522-2210.59	Barrette Pile BC59	2	07-Jun-12 A	21-Jun-12	Barrette Pile BC59																
0522-2210.66	Barrette Pile BC66	0	28-May-12 A	08-Jun-12 A	Barrette Pile BC66																
0522-2210.70	Barrette Pile BC62	0	01-Jun-12 A	13-Jun-12 A	Barrette Pile BC62																
0522-2210.56	Barrette Pile BC56	10	03-Jul-12	13-Jul-12	Barrette Pile BC56																
0522-2210.55	Barrette Pile BC58	10	14-Jul-12	25-Jul-12	Barrette Pile BC58																
0522-2210.58	Barrette Pile BC55	10	26-Jul-12	06-Aug-12	Barrette Pile BC55																
0522-2185	Barrette BC54 Pre-drilling	0	21-May-12 A	26-May-12 A	Barrette BC54 Pre-drilling																
0522-2190	Barrette BC54-BC56 Grouting for Existing Seawall Rubble Mound	9	20-Jun-12	30-Jun-12	Barrette BC54-BC56 Grouting for Existing Seawall Rubble Mound																
0522-2200	Barrette BC54-BC56 Guide Wall	9	25-Jun-12	05-Jul-12	Barrette BC54-BC56 Guide Wall																

- Remaining Level of Effort
- Actual Level of Effort
- Actual Work
- Remaining Work
- Critical Remaining Work
- ◆ Milestone

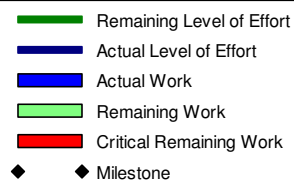
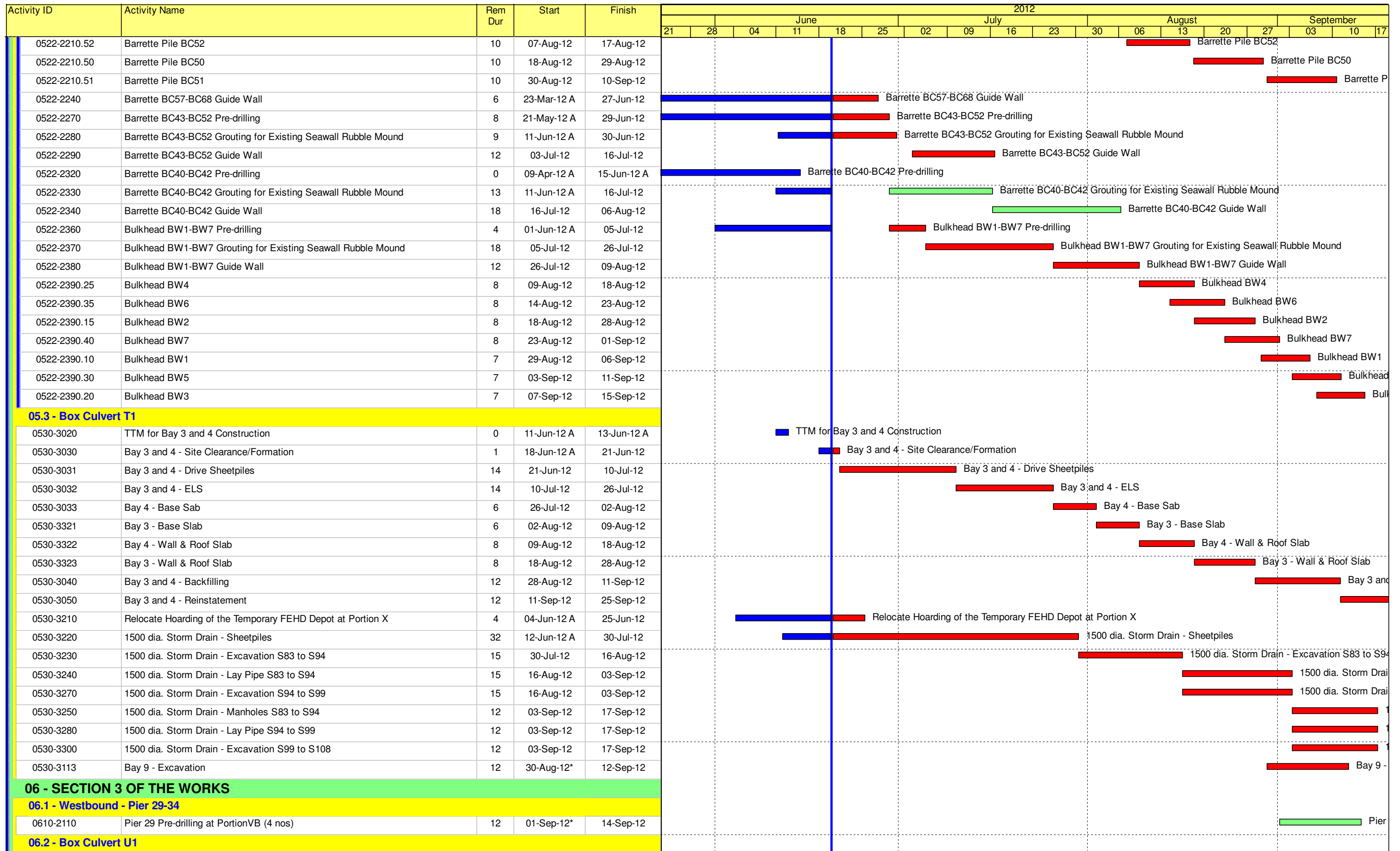
**Contract HY/2009/19**

**Three Month Rolling Programme (20 JUN 2012 to 19 SEP 2012)**

3MRP

3MRP - JUN 2012 to SEP 2012

Page 3 of 7



**Contract HY/2009/19**

**Three Month Rolling Programme (20 JUN 2012 to 19 SEP 2012)**

3MRP

3MRP - JUN 2012 to SEP 2012

Page 4 of 7

Activity ID	Activity Name	Rem Dur	Start	Finish	2012																
					June					July					August				September		
					21	28	04	11	18	25	02	09	16	23	30	06	13	20	27	03	10
0620-2355	U1 Pre-bored H-pile Bay 9-12 (16 nos/3 set) at III	0	05-Apr-12 A	04-Jun-12 A	U1 Pre-bored H-pile Bay 9-12 (16 nos/3 set) at III																
0620-2340	U1 Pre-drilling for piling for U1 (48no) (4 set) at VB,VD&III	12	10-Jan-12 A	05-Jul-12	U1 Pre-drilling for piling for U1 (48no) (4 set) at VB,VD&III																
0620-2345	U1 Pre-bored H-pile Bay 7-8 (8 nos/1 set) at VB,VD & III	30	12-Apr-12 A	26-Jul-12	U1 Pre-bored H-pile Bay 7-8 (8 nos/1 set) at VB,VD & III																
0620-2350	U1 Pre-bored H-pile Bay 1-6 (24 nos/3 set) at VB	39	04-Jun-12 A	21-Aug-12	U1 Pre-bored H-pile Bay 1-6 (24 nos/3 set) at VB																
<b>10 - SECTION X OF THE WORKS</b>																					
<b>10.1 - E/B Bridges (Bridge D, E and F)</b>																					
<b>10.1.1 - Marine Pier Construction</b>																					
<b>Pier F03 to F15</b>																					
1011-1760.70	Pier F3 Marine Bore Pile - F3-1	0	26-Apr-12 A	30-May-12 A	Pier F3 Marine Bore Pile - F3-1																
1011-1760.80	Pier F3 Marine Bore Pile - F3-5	2	01-Jun-12 A	22-Jun-12	Pier F3 Marine Bore Pile - F3-5																
1011-2090	Marine bored pile testing F3	3	02-Mar-12 A	27-Jun-12	Marine bored pile testing F3																
1011-1750.10	Pier F3 Dolphin Socketed H-Pile 1	9	14-Jul-12	25-Jul-12	Pier F3 Dolphin Socketed H-Pile 1																
1011-1750.20	Pier F3 Dolphin Socketed H-Pile 1	9	25-Jul-12	04-Aug-12	Pier F3 Dolphin Socketed H-Pile 1																
1011-1750.30	Pier F3 Dolphin Socketed H-Pile 1	9	04-Aug-12	15-Aug-12	Pier F3 Dolphin Socketed H-Pile 1																
1011-1990	Dismantle Piling Platform at Pier F3	6	15-Aug-12	22-Aug-12	Dismantle Piling Platform at Pier F3																
1011-2150	F3 Pile Cap Construction	18	22-Aug-12	12-Sep-12	F3 Pile Cap Construction																
1011-1850.10	Pier F4 Dolphin Socketed H-Pile 1	5	25-May-12 A	27-Jun-12	Pier F4 Dolphin Socketed H-Pile 1																
1011-1850.20	Pier F4 Dolphin Socketed H-Pile 2	5	04-Jun-12 A	04-Jul-12	Pier F4 Dolphin Socketed H-Pile 2																
1011-1850.30	Pier F4 Dolphin Socketed H-Pile 3	9	04-Jul-12	14-Jul-12	Pier F4 Dolphin Socketed H-Pile 3																
1011-2000	Dismantle Piling Platform at Pier F4	6	14-Jul-12	21-Jul-12	Dismantle Piling Platform at Pier F4																
1011-1810.10	Pier F5 Dolphin Socketed H-Pile 1	7	23-Jul-12	30-Jul-12	Pier F5 Dolphin Socketed H-Pile 1																
1011-1810.20	Pier F5 Dolphin Socketed H-Pile 2	7	31-Jul-12	07-Aug-12	Pier F5 Dolphin Socketed H-Pile 2																
1011-1810.30	Pier F5 Dolphin Socketed H-Pile 3	7	08-Aug-12	15-Aug-12	Pier F5 Dolphin Socketed H-Pile 3																
1011-1810.40	Pier F5 Dolphin Socketed H-Pile 4	7	16-Aug-12	23-Aug-12	Pier F5 Dolphin Socketed H-Pile 4																
1011-1810.50	Pier F5 Dolphin Socketed H-Pile 5	7	24-Aug-12	31-Aug-12	Pier F5 Dolphin Socketed H-Pile 5																
1011-1810.60	Pier F5 Dolphin Socketed H-Pile 6	7	01-Sep-12	08-Sep-12	Pier F5 Dolphin Socketed H-Pile 6																
1011-2010	Dismantle Piling Platform at Pier F5	6	10-Sep-12	15-Sep-12	Dismantle Piling Platform at Pier F5																
1011-1800.30	Pier F6 Marine Bore Pile - F6-4	0	28-Feb-12 A	15-Jun-12 A	Pier F6 Marine Bore Pile - F6-4																
1011-2105	Marine bored pile testing F6	12	20-Jun-12	05-Jul-12	Marine bored pile testing F6																
1011-1790.10	Pier F6 Dolphin Socketed H-Pile 1	7	23-Jul-12	30-Jul-12	Pier F6 Dolphin Socketed H-Pile 1																
1011-1790.20	Pier F6 Dolphin Socketed H-Pile 2	7	01-Aug-12	08-Aug-12	Pier F6 Dolphin Socketed H-Pile 2																
1011-1790.30	Pier F6 Dolphin Socketed H-Pile 3	7	10-Aug-12	17-Aug-12	Pier F6 Dolphin Socketed H-Pile 3																
1011-1790.40	Pier F6 Dolphin Socketed H-Pile 4	7	20-Aug-12	27-Aug-12	Pier F6 Dolphin Socketed H-Pile 4																
1011-1790.50	Pier F6 Dolphin Socketed H-Pile 5	7	29-Aug-12	05-Sep-12	Pier F6 Dolphin Socketed H-Pile 5																
1011-1790.60	Pier F6 Dolphin Socketed H-Pile 6	7	07-Sep-12	14-Sep-12	Pier F6 Dolphin Socketed H-Pile 6																
1011-2020	Dismantle Piling Platform at Pier F6	6	15-Sep-12	21-Sep-12	Dismantle Piling Platform at Pier F6																
1011-1920.30	Pier F7 Marine Bored Pile F7-1	0	11-Apr-12 A	12-Jun-12 A	Pier F7 Marine Bored Pile F7-1																
1011-2110	Marine bored pile testing F7	3	14-Jun-12 A	22-Jun-12	Marine bored pile testing F7																
1011-1910	Pier F7 Dolphin Socketed H-Pile (6 nos.)	42	10-Sep-12	30-Oct-12	Pier F7 Dolphin Socketed H-Pile (6 nos.)																
1011-1864.40	Pier F8 Marine Bored Pile F8-3	0	31-Mar-12 A	31-May-12 A	Pier F8 Marine Bored Pile F8-3																
1011-2115	Marine bored pile testing F8	3	04-Jun-12 A	22-Jun-12	Marine bored pile testing F8																
1011-1862	Pier F8 Dolphin Socketed H-Pile (6 nos.)	42	15-Sep-12	05-Nov-12	Pier F8 Dolphin Socketed H-Pile (6 nos.)																
1011-1805	Pier F9 Marine Bored Pile	18	21-Jun-12*	13-Jul-12	Pier F9 Marine Bored Pile																
1011-1806	Pier F9 Marine Bored Pile (Low Headroom)	35	14-Jul-12	23-Aug-12	Pier F9 Marine Bored Pile (Low Headroom)																

- Remaining Level of Effort
- Actual Level of Effort
- Actual Work
- Remaining Work
- Critical Remaining Work
- ◆ Milestone

**Contract HY/2009/19**

**Three Month Rolling Programme (20 JUN 2012 to 19 SEP 2012)**

3MRP

3MRP - JUN 2012 to SEP 2012

Page 5 of 7





Activity ID	Activity Name	Rem Dur	Start	Finish	2012																
					June					July					August					September	
					21	28	04	11	18	25	02	09	16	23	30	06	13	20	27	03	10
<b>Abutment D12</b>																					
1012-1090	Abutment D12 E/B Bridge Bored Pile Testing	9	21-May-12 A	30-Jun-12	Abutment D12 E/B Bridge Bored Pile Testing																
1012-1220	Abutment D12 construction (E/B Bridge)	42	03-Aug-12	20-Sep-12																	
<b>Pier D08 to D11</b>																					
1012-1030.05	Complete Relocation of FEHD Hoarding at Portion III	0		04-Jun-12 A	◆ Complete Relocation of FEHD Hoarding at Portion III																
1012-1030.10	Pier D08 Bored Pile D8-5	12	04-Jun-12 A	05-Jul-12	Pier D08 Bored Pile D8-5																
1012-1030.20	Pier D08 Bored Pile D8-2	12	11-Jun-12 A	19-Jul-12	Pier D08 Bored Pile D8-2																
1012-1030.30	Pier D08 Bored Pile D8-1	12	20-Jul-12	02-Aug-12	Pier D08 Bored Pile D8-1																
1012-1030.40	Pier D08 Bored Pile D8-6	12	03-Aug-12	16-Aug-12	Pier D08 Bored Pile D8-6																
1012-1030.50	Pier D08 Bored Pile D8-3	12	17-Aug-12	30-Aug-12	Pier D08 Bored Pile D8-3																
1012-1030.60	Pier D08 Bored Pile D8-4	12	31-Aug-12	13-Sep-12	Pier D08 Bored Pile D8-4																
1012-1130	Pier D09 Construct Pile Cap	18	01-Jun-12 A	12-Jul-12	Pier D09 Construct Pile Cap																
1012-1140	Pier D09 Construct Pier/Column	12	13-Jul-12	26-Jul-12	Pier D09 Construct Pier/Column																
1012-1150	Pier D09 Construct Crosshead	18	27-Jul-12	16-Aug-12	Pier D09 Construct Crosshead																
1012-1160	Pier D10 Construct Pile Cap	18	20-Jun-12	12-Jul-12	Pier D10 Construct Pile Cap																
1012-1170	Pier D10 Construct Pier/Column	12	13-Jul-12	26-Jul-12	Pier D10 Construct Pier/Column																
1012-1180	Pier D10 Construct Crosshead	18	17-Aug-12	06-Sep-12	Pier D10 Construct Crosshead																
1012-1190	Pier D11 Construct Pile Cap	18	12-Jun-12 A	02-Aug-12	Pier D11 Construct Pile Cap																
1012-1200	Pier D11 Construct Pier/Column	12	03-Aug-12	16-Aug-12	Pier D11 Construct Pier/Column																
1012-1210	Pier D11 Construct Crosshead	18	17-Aug-12	06-Sep-12	Pier D11 Construct Crosshead																
<b>Pier D05 to D07</b>																					
1012-1290.20	Pier D05 Bored Pile D05-1	12	01-Aug-12*	14-Aug-12	Pier D05 Bored Pile D05-1																
1012-1300	Pier D05/D06/D07 Bored Piles Testing	18	15-Aug-12	04-Sep-12	Pier D05/D06/D07 Bored Piles Testing																
1012-1310	Pier D06 Construct Pile Cap	18	05-Sep-12	25-Sep-12	Pier D06 Construct Pile Cap																
1012-1270	Pier D07 Bored Pile D07-2	12	09-Jun-12 A	05-Jul-12	Pier D07 Bored Pile D07-2																
1012-1271	Pier D07 Bored Pile D07-5	18	06-Jul-12	26-Jul-12	Pier D07 Bored Pile D07-5																
1012-1272	Pier D07 Bored Pile D07-3	18	27-Jul-12	16-Aug-12	Pier D07 Bored Pile D07-3																
1012-1273	Pier D07 Bored Pile D07-6	18	17-Aug-12	06-Sep-12	Pier D07 Bored Pile D07-6																
1012-1274	Pier D07 Bored Pile D07-1	18	07-Sep-12	27-Sep-12	Pier D07 Bored Pile D07-1																
<b>10.1.3 - E/B Bridge Construction</b>																					
<b>Bridge D3</b>																					
1013-1000.10	Segment and Beam Launching - Procurement of Sub-contractor	0	21-Jan-12 A	05-Jun-12 A	Segment and Beam Launching - Procurement of Sub-contractor																
1013-1000.20	Segment and Beam Launching - Submit Design Launching Girder	24	14-May-12 A	19-Jul-12	Segment and Beam Launching - Submit Design Launching Girder																
1013-1010	Segment and Beam Launching - Fabricate Launching Girder	60	11-Jun-12 A	30-Aug-12	Segment and Beam Launching - Fabricate Launching Girder																
1013-1000.30	Segment and Beam Launching - Approve Design Launching Girder	28	20-Jul-12	21-Aug-12	Segment and Beam Launching - Approve Design Launching Girder																
1013-1011	Segment and Beam Launching - Approve Design Launching Girder	9	31-Aug-12	10-Sep-12	Segment and Beam Launching - Approve Design Launching Girder																
<b>10.3 - Middle Bridge (Bridge F)</b>																					
<b>10.3.1 - Pier Construction</b>																					
<b>Abutment D12</b>																					
1031-1040	Bored Piles (4 nos) at D12 at III (for F1B1)	0	07-May-12 A	01-Jun-12 A	Bored Piles (4 nos) at D12 at III (for F1B1)																

- █ Remaining Level of Effort
- █ Actual Level of Effort
- █ Actual Work
- █ Remaining Work
- █ Critical Remaining Work
- ◆ Milestone

**Contract HY/2009/19**

**Three Month Rolling Programme (20 JUN 2012 to 19 SEP 2012)**

3MRP

3MRP - JUN 2012 to SEP 2012

Page 7 of 7